



GCSE Early Entry

Is it a good thing?

Today's content

- Background and dataset
- Entry profile in 2010, 2011 and 2012
- Grade outcome comparison between early/normal entries
- Re-sitting – would grades at re-sit be significantly improved?
- Impact of prior attainment at KS2 tests
- Summary
- Q & A

Background and dataset

- Upsurge in number of early entries in recent years
- Issues:
 - Are early entrants not reaching their full potential? (CP/TG)
 - Is there any impact on their choices of subjects at A-level? (TG)
- This study covers pupils taking OCR GCSE English and Maths exams in 2010, 2011 and 2012

- New specs are first certificated in June 2012
- Specs last certificated in Jan 2012 are referred to as legacy specs

Subjects and specifications - OCR

Subject	Year 2010/2011	Year 2012
English / English Language	1900 English (unitised)	1900 English (unitised) J350 English (unitised) J355 English Language (unitised)
English Literature	1901 Eng. Lit. (unitised)	1901 Eng. Lit. (unitised) J360 Eng. Lit. (unitised)
Maths	J512 Maths A (linear) J519 Maths B (unitised) J517 Maths C (unitised)	J512 Maths A (linear) J519 Maths B (unitised) J517 Maths C (unitised) J562 Maths A (unitised) J567 Maths B (linear)

Who are early entries?

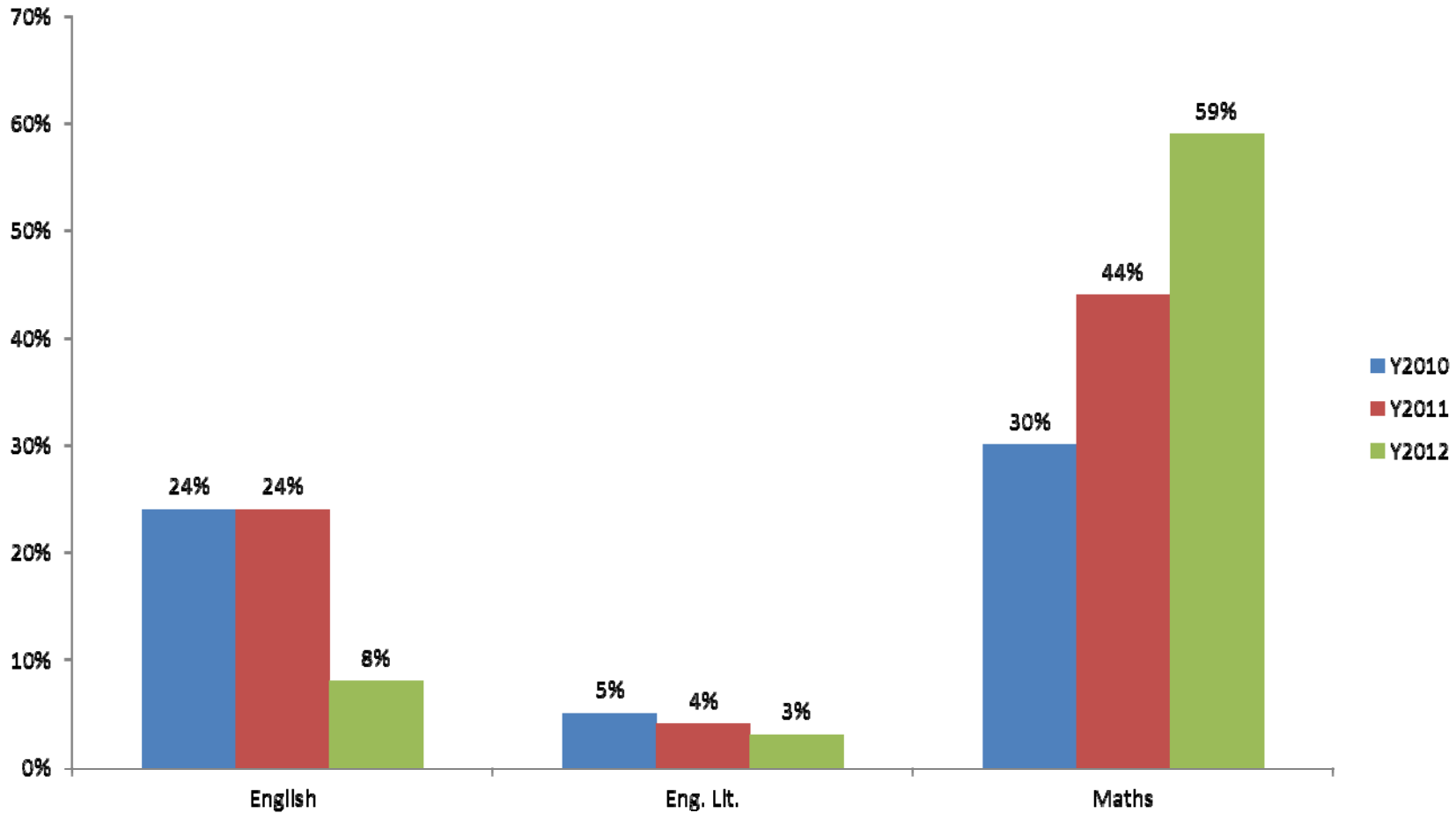
Take year 2010 as an example

- Pupil's date of birth is used as an indicator
- Normal entry → Year 11 pupils taking June exam
- Early entry → Year 11 pupils taking Jan exam and all Year 10 pupils
- Only a very small proportion of Year 9 pupils → excluded

Entry profile of KS4 pupils taking OCR GCSE exams

Subject	Entries	2010	2011	2012
English/English Language	Early (%)	24%	24%	8%
	Normal (%)	76%	76%	92%
	Total	43,000	38,000	46,000
English Literature	Early (%)	5%	4%	3%
	Normal (%)	95%	96%	97%
	Total	26,000	24,000	35,000
Maths	Early (%)	30%	44%	59%
	Normal (%)	70%	56%	41%
	Total	107,000	114,000	97,000

Proportions of early entries taking OCR GCSE exams



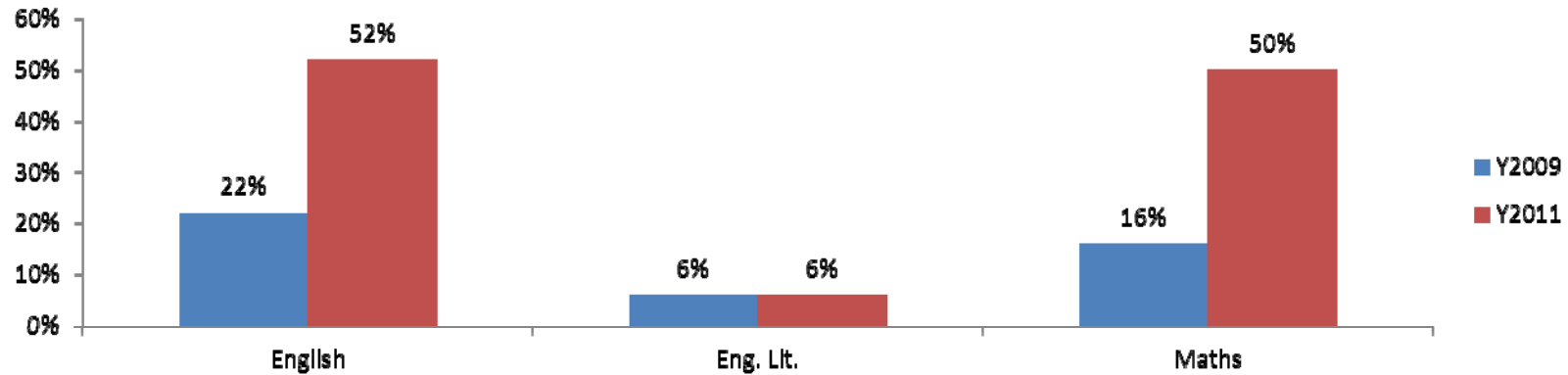
Trend on early entries

- DfE report 2011 – proportions of early entries for all subjects
- 5% in 2007
- 25% in 2010

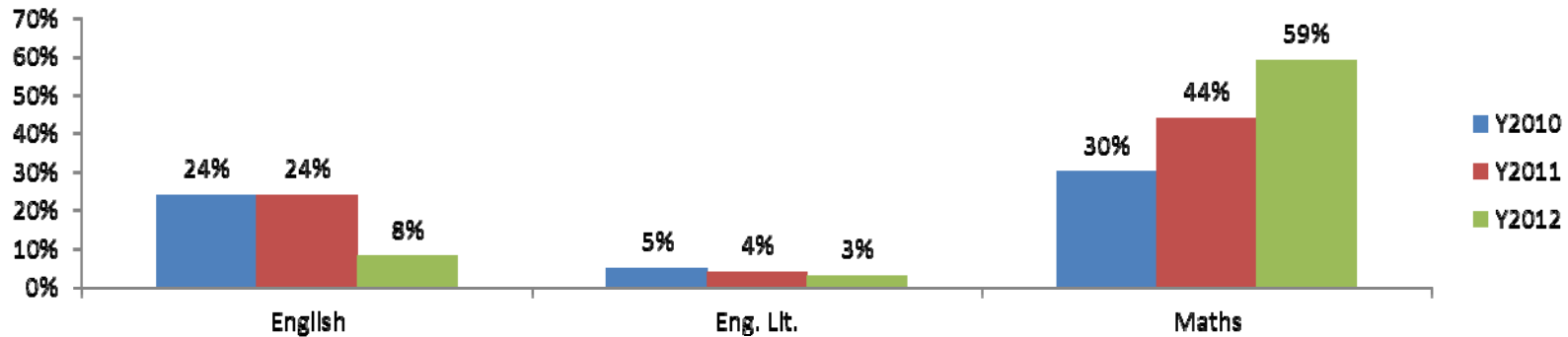
Subject	National		OCR		
	2009	2011	2010	2011	2012
Eng./Eng. Lang.	22%	52%	24%	24%	8%
Eng. Lit.	6%	6%	5%	4%	3%
Maths	16%	50%	30%	44%	59%
All 3 subjects	15%	39%	24%	34%	35%
Entries ('000)	1,684	1,654	193	193	196

Trend of early entries – national and OCR data

National data

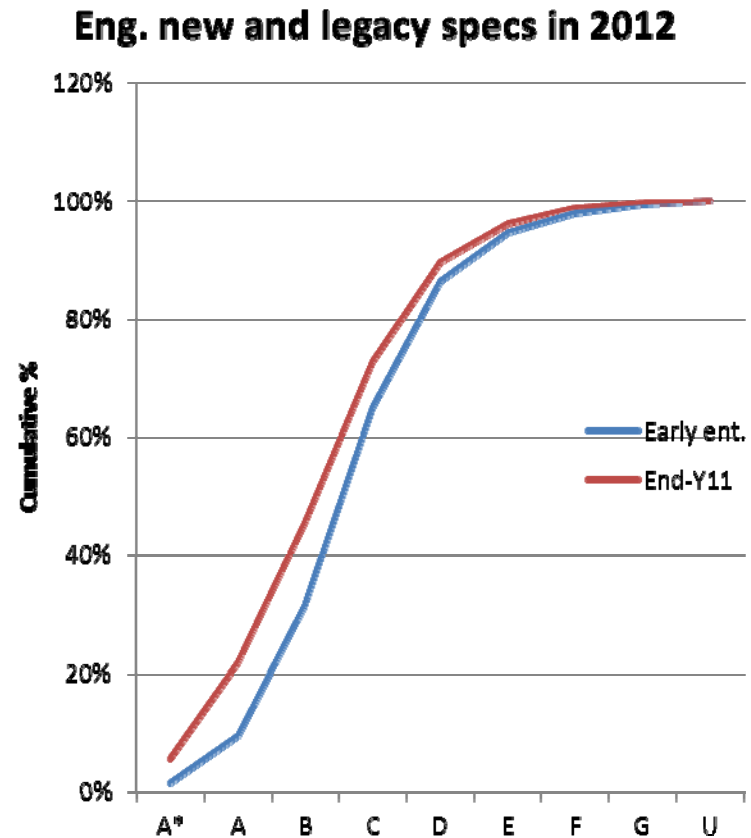
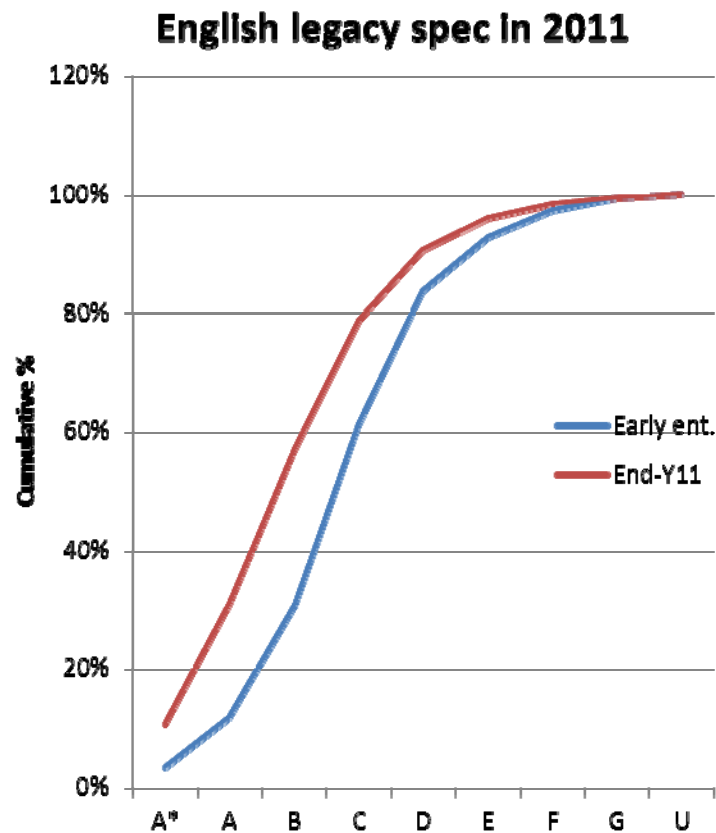


OCR data



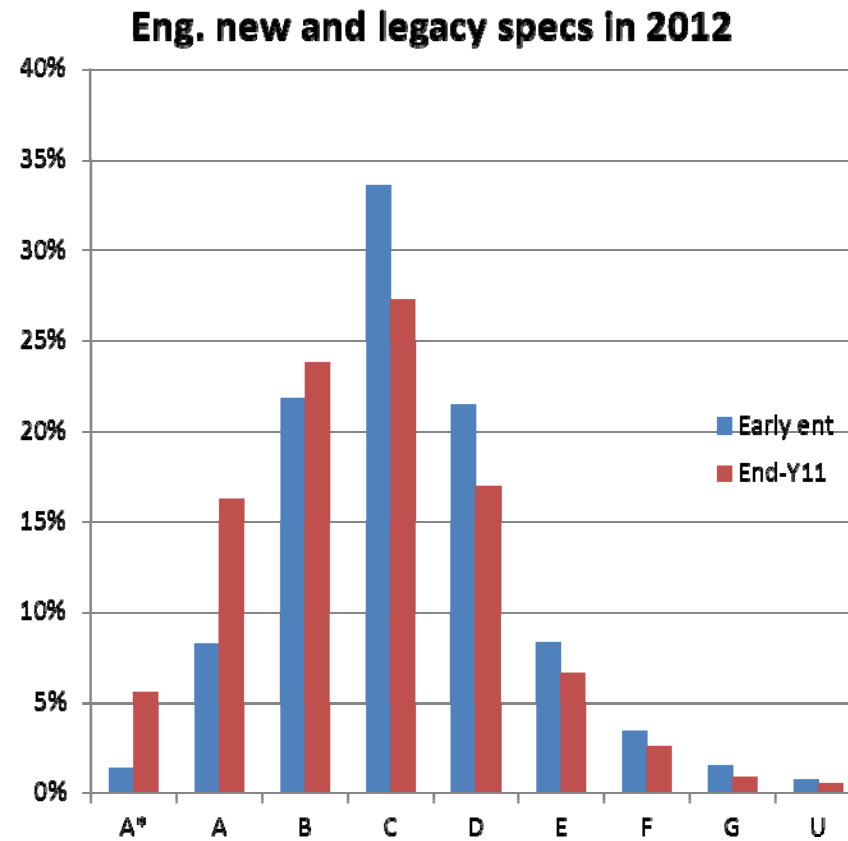
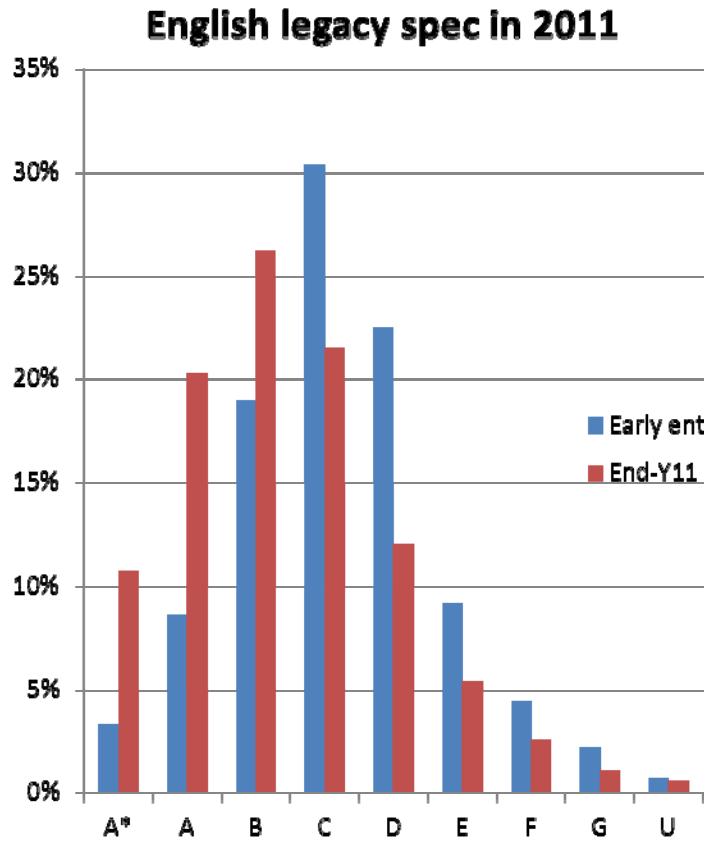
Cumulative grade distributions in years 2011/2012

- English / English Language



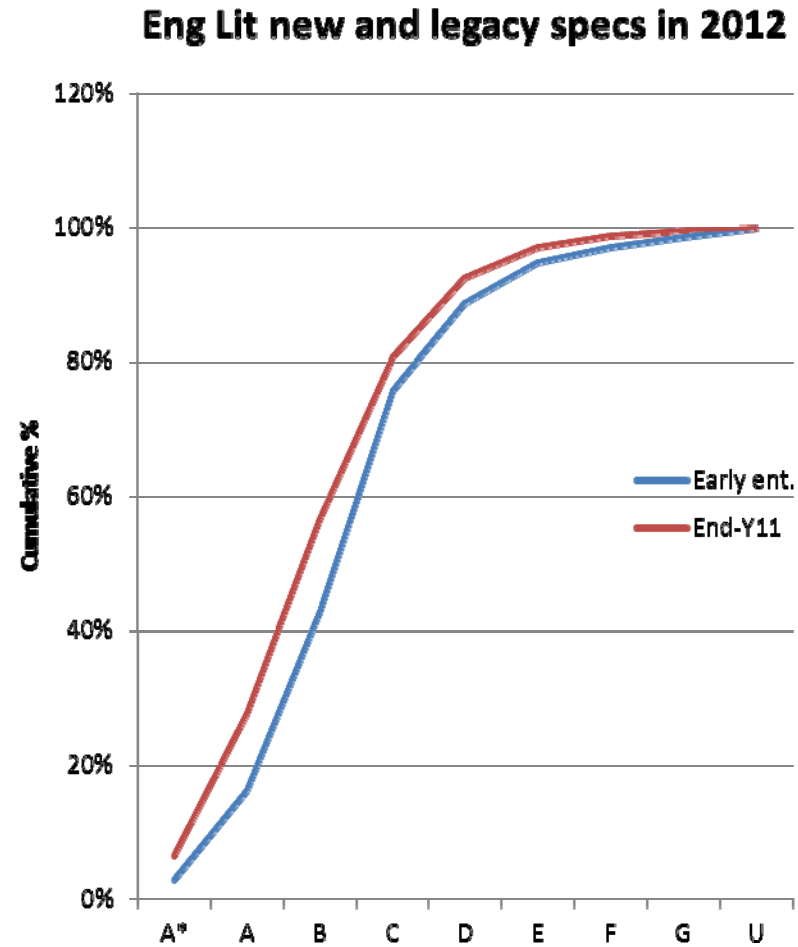
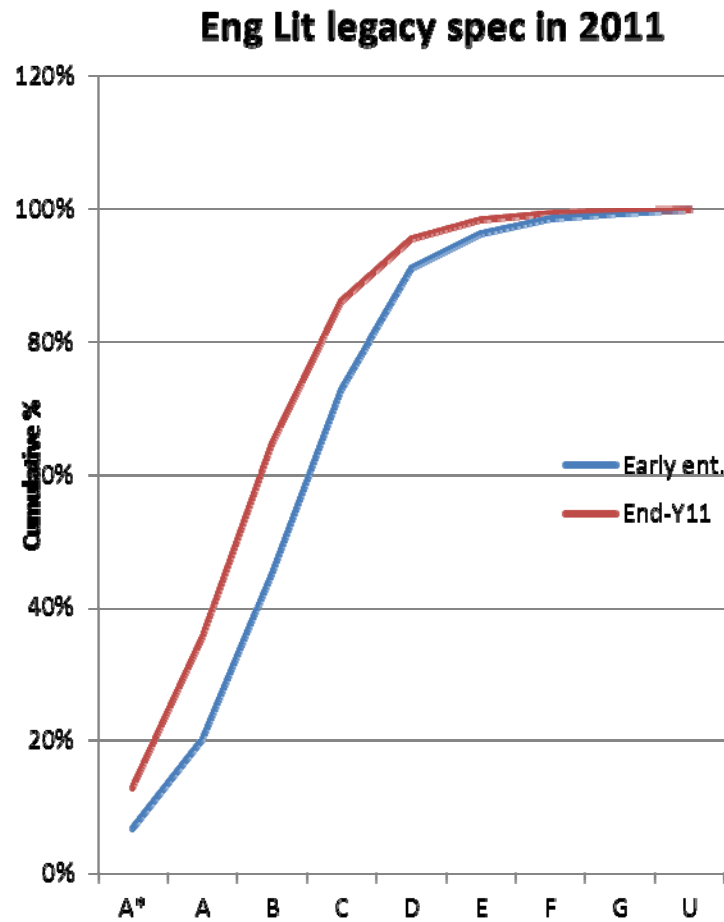
Grade distributions in years 2011/2012

- English / English Language



Cumulative grade distributions in years 2011/2012

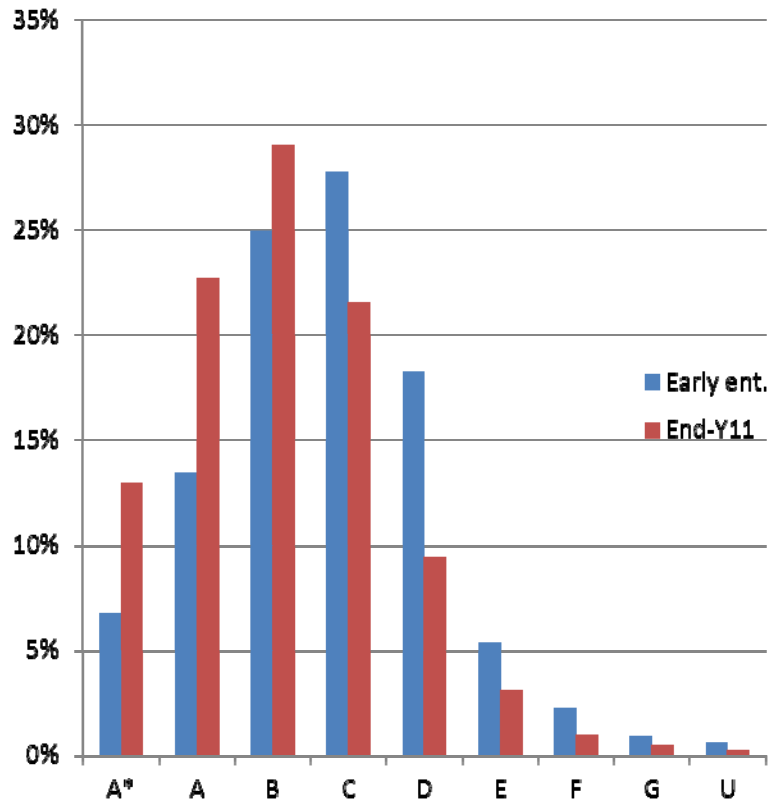
- English Literature



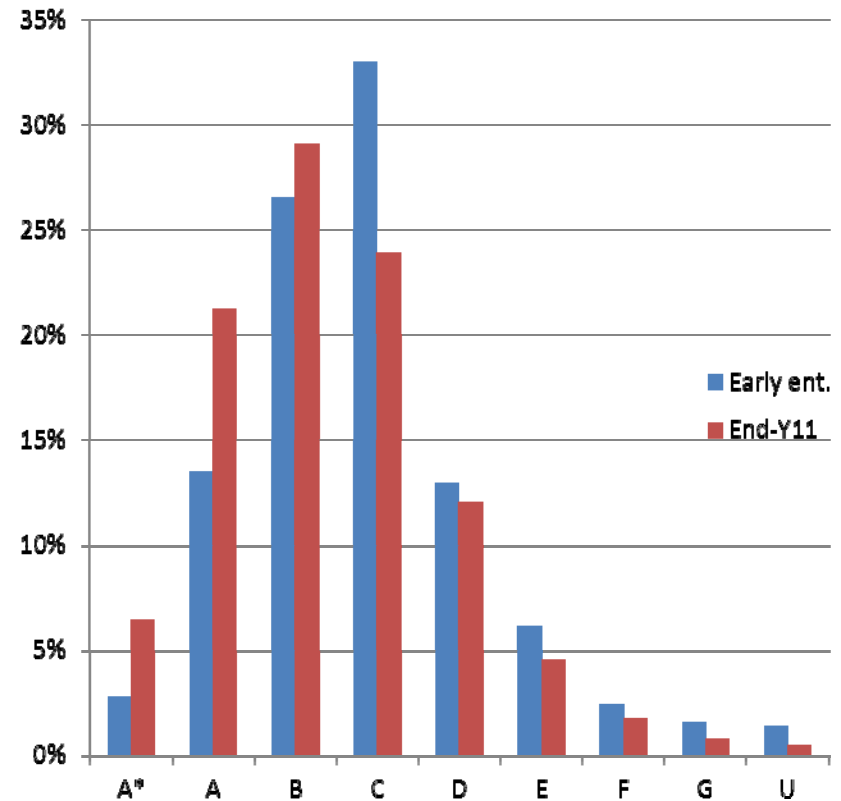
Grade distributions in years 2011/2012

- English Literature

Eng Lit legacy spec in 2011



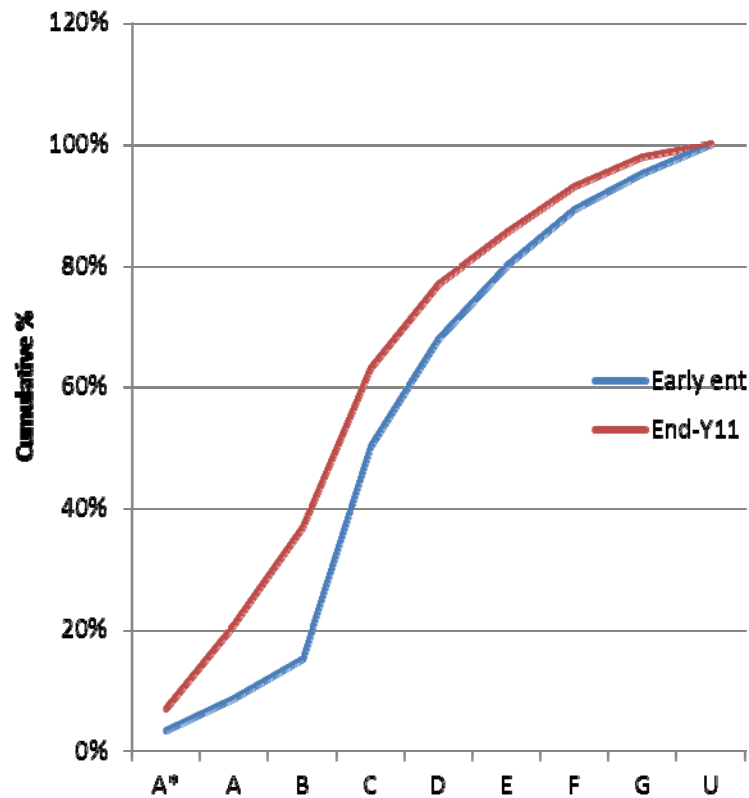
Eng Lit new and legacy specs in 2012



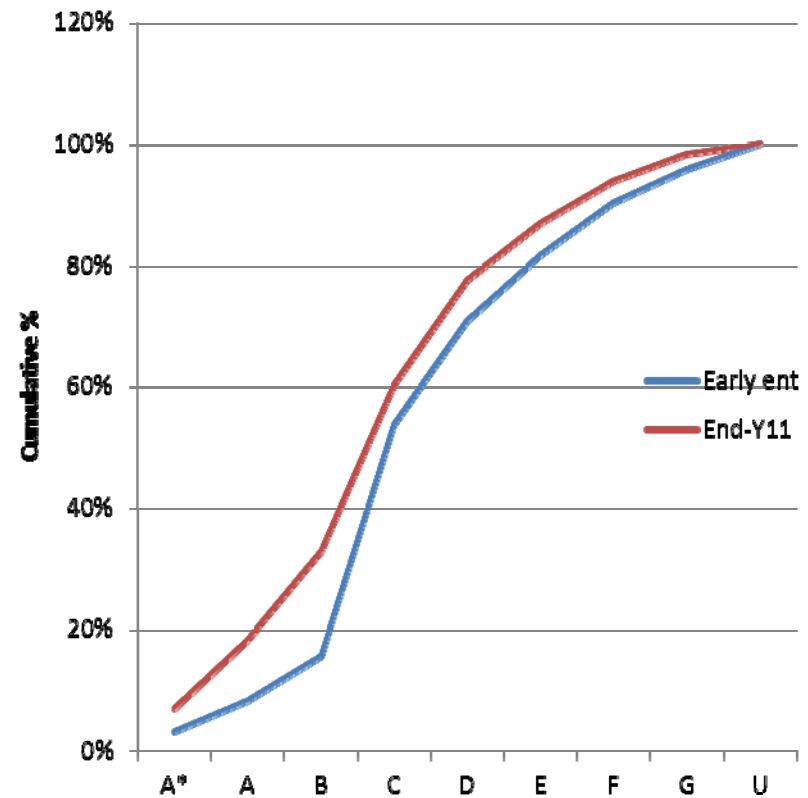
Cumulative grade distributions in years 2011/2012

- Maths

Maths legacy specs in 2011



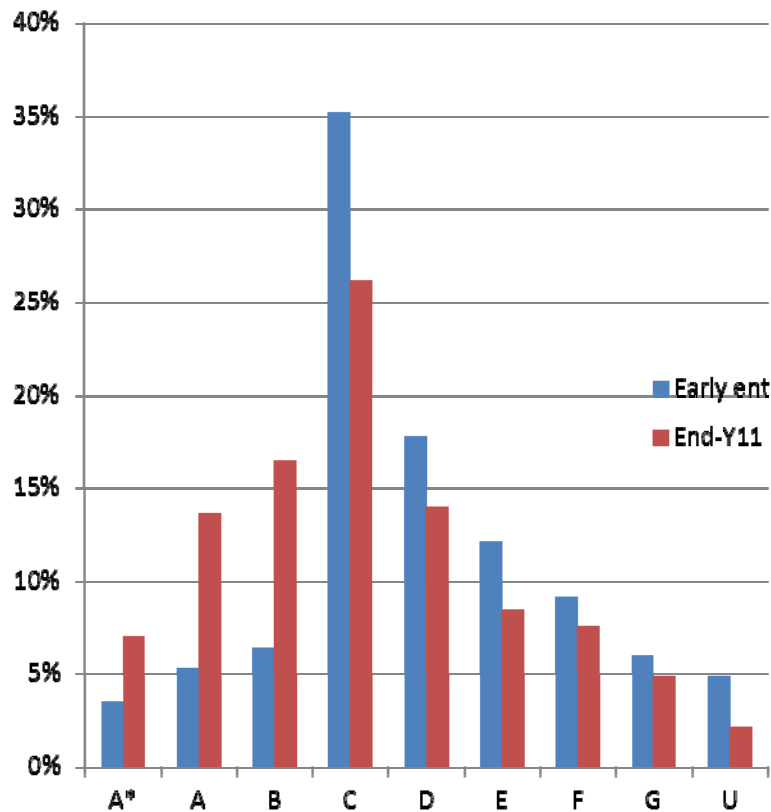
Maths legacy and new specs in 2012



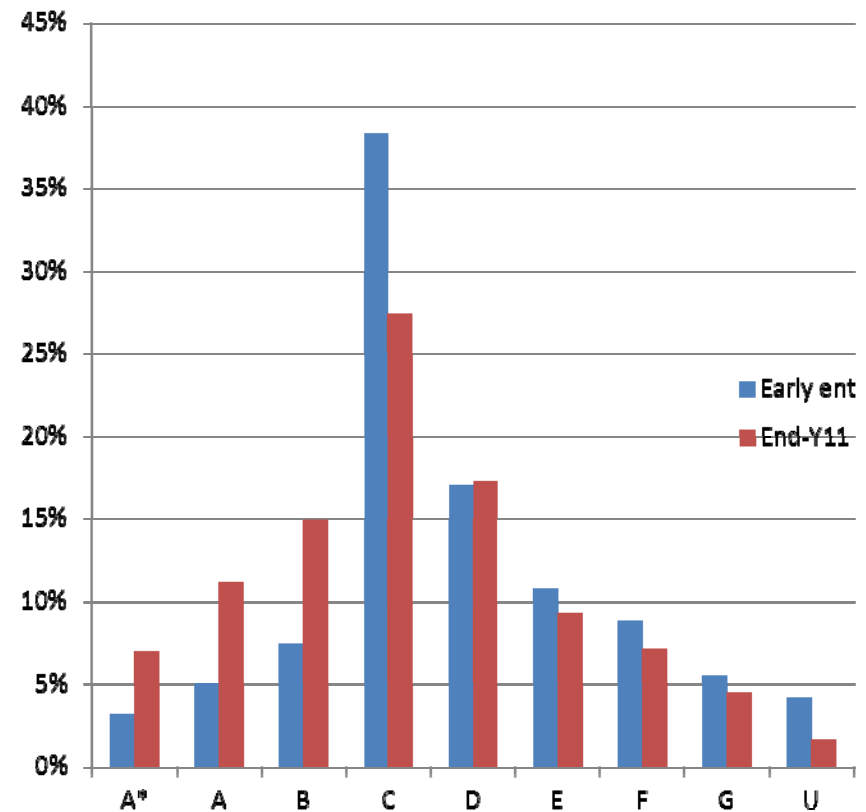
Grade distributions in years 2011/2012

- Maths

Maths legacy specs in 2011



Maths legacy and new specs in 2012

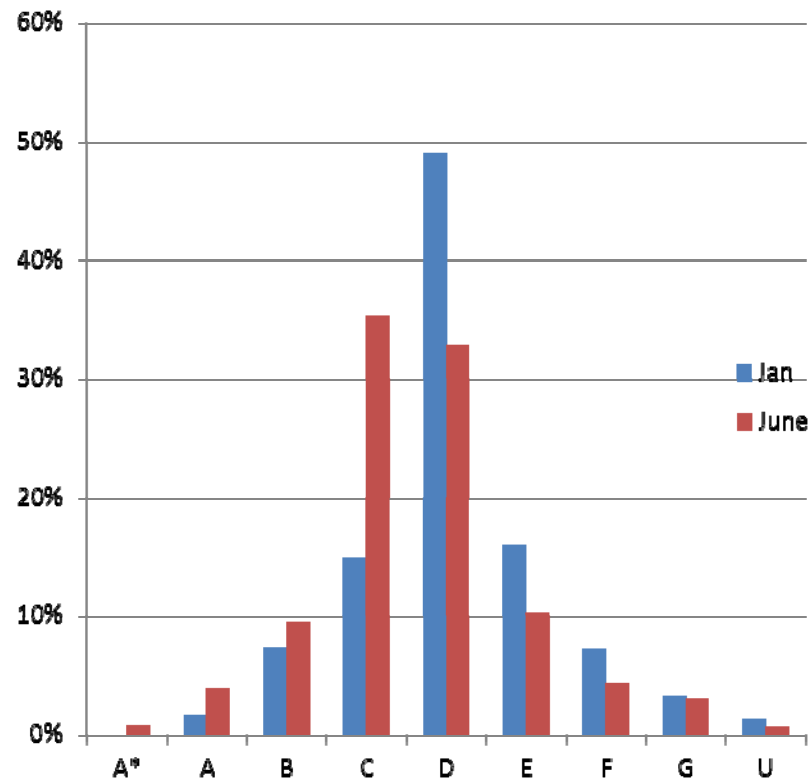


Re-sit of early entrants

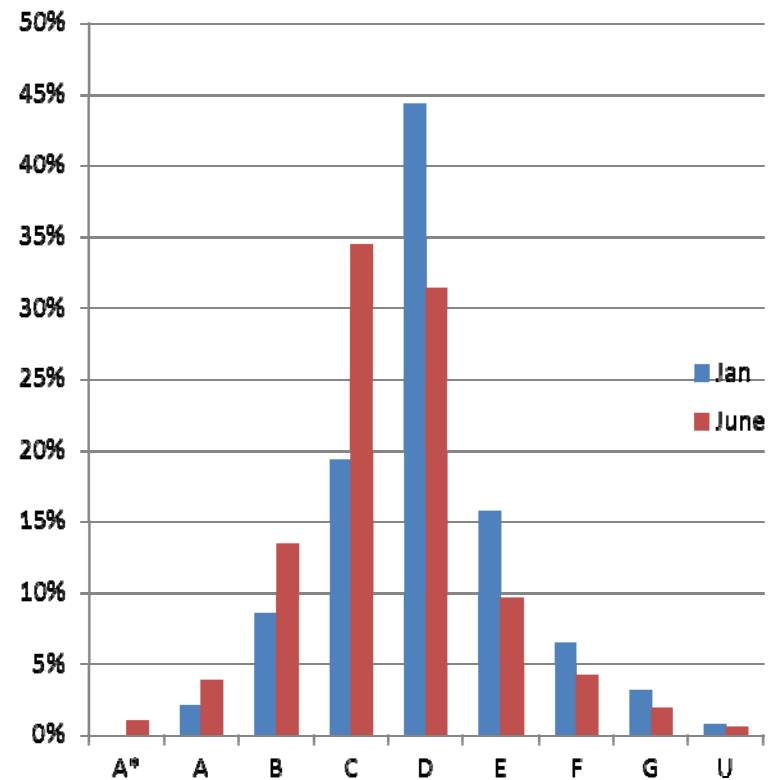
- Candidates who re-sat the June exam were mostly Year 11 pupils (more than 90%) who had taken the January session exam.
- Legacy specs with large re-sit entries (more than 2,000) are included in this analysis. (English 1900 and Maths J512).
- Not applicable to new specs as they were first certificated in June 2012.

Grade outcome of pupils resitting June session after attempting January session – English 1900

Re-sits of English 1900 in 2010



Re-sits of English 1900 in 2011



Grade outcome of pupils resitting June session after attempting January session – English 1900 in 2010/11

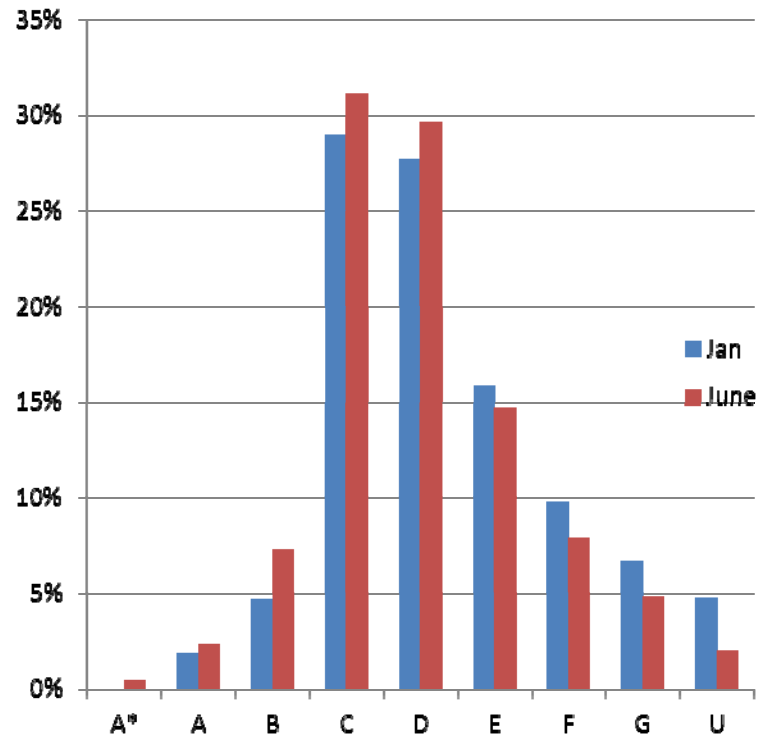
Grade in June 2011 session	Grade in Jan 2011 session							
	A	B	C	D	E	F	G	U
A*	47.5	0.4	0.0	0.0	0.0	0.0	0.0	0.0
A	45.9	31.0	0.5	0.2	0.2	0.5	0.0	0.0
B	6.6	60.5	34.9	2.6	0.8	1.0	1.1	0.0
C	0.0	7.3	57.2	45.7	13.5	4.0	3.2	0.0
D	0.0	0.4	5.1	46.9	50.2	20.7	12.8	0.0
E	0.0	0.0	1.0	3.8	28.1	39.9	19.2	25.0
F	0.0	0.4	0.2	0.5	4.6	27.3	37.2	35.0
G	0.0	0.0	1.2	0.4	2.1	4.0	21.3	30.0
U	0.0	0.0	0.0	0.0	0.4	2.5	5.3	10.0
count	60	260	590	1360	480	200	90	20

Grade in June session	2010	2011
higher than Jan session	50%	49%
same as Jan session	44%	45%
lower than Jan session	6%	6%
Total	100%	100%
Count	2,440	3,060

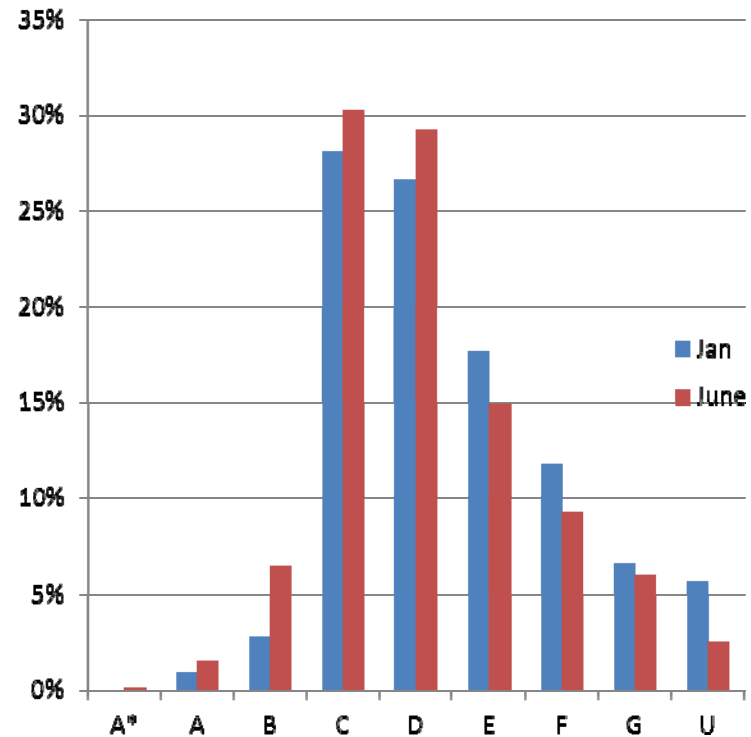
- The yellow diagonal line represents pupils getting the same grade in both sessions
- % above the yellow line represents grade enhanced; % below it → grade worsened

Grade outcome of pupils resitting June session after attempting January session – Maths J512

Re-sits of Maths J512 in 2010



Re-sits of Maths J512 in 2011



Grade outcome of pupils resitting June session after attempting January session – Maths J512 in 2010/11

Grade in June 2011 session	Grade in Jan 2011 session							
	A	B	C	D	E	F	G	U
A*	5.4	0.4	0.1	0.0	0.0	0.0	0.0	0.0
A	59.8	10.9	2.3	0.0	0.0	0.0	0.0	0.0
B	32.6	61.8	15.7	0.1	0.0	0.2	0.0	0.0
C	0.0	22.2	44.7	52.0	15.1	3.2	2.1	0.9
D	1.1	4.4	30.7	40.4	43.9	13.0	5.1	1.4
E	1.1	0.4	4.9	6.3	33.6	40.9	12.8	4.9
F	0.0	0.0	0.0	0.6	5.8	35.8	45.8	13.5
G	0.0	0.0	0.0	0.5	1.1	6.1	31.3	50.5
U	0.0	0.0	1.7	0.1	0.5	0.8	2.9	28.8
count	90	280	2820	2670	1780	1180	660	570

Grade in June session	2010	2011
higher than Jan session	43%	45%
same as Jan session	41%	39%
lower than Jan session	16%	16%
Total	100%	100%
Count	6,380	10,050

- The yellow diagonal line represents pupils getting the same grade in both sessions
- % above the yellow line represents grade enhanced; % below it → grade worsened

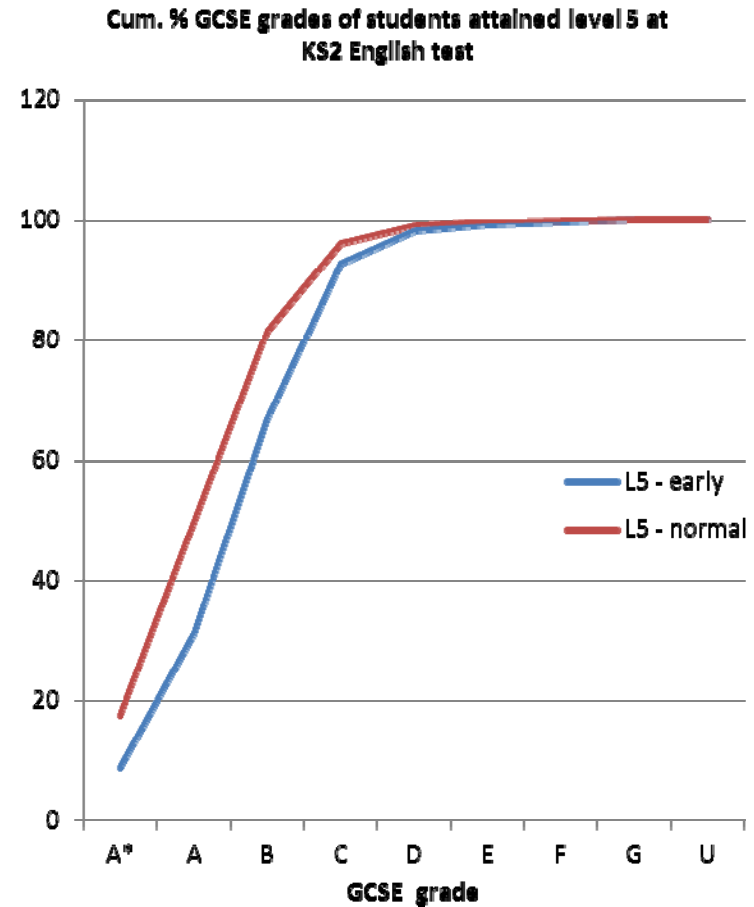
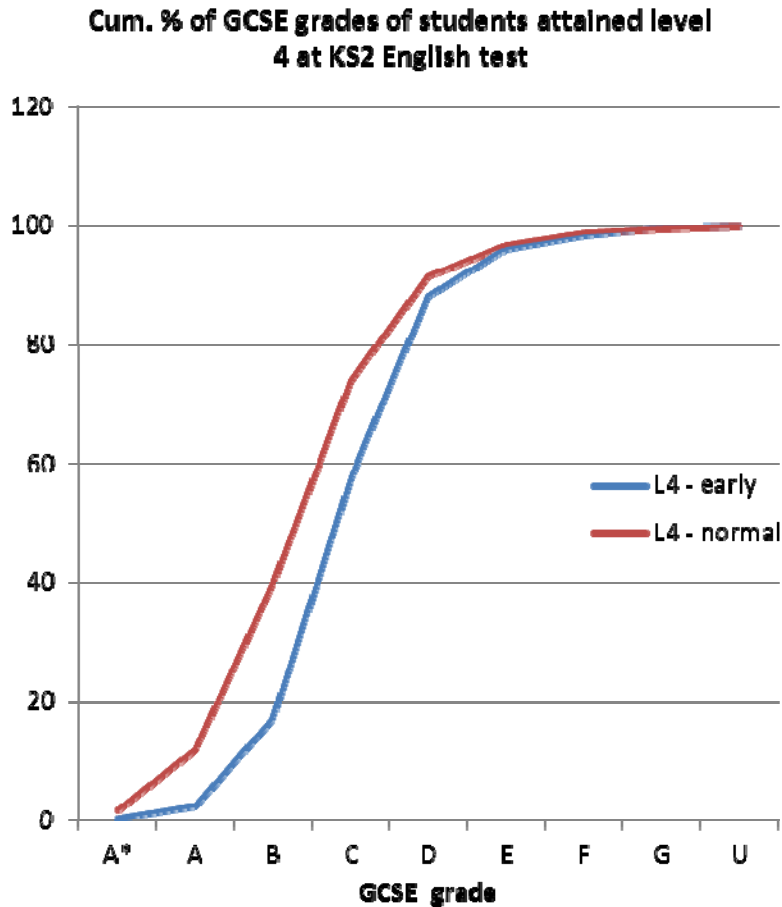
How likely were pupils to re-sit when they got grades around C in end Year 10?

GCSE Maths grade in end Year 10	DfE's research	Year 10 pupils taking OCR in June 2010
D	98%	72%
C	76%	53%
B	63%	53%

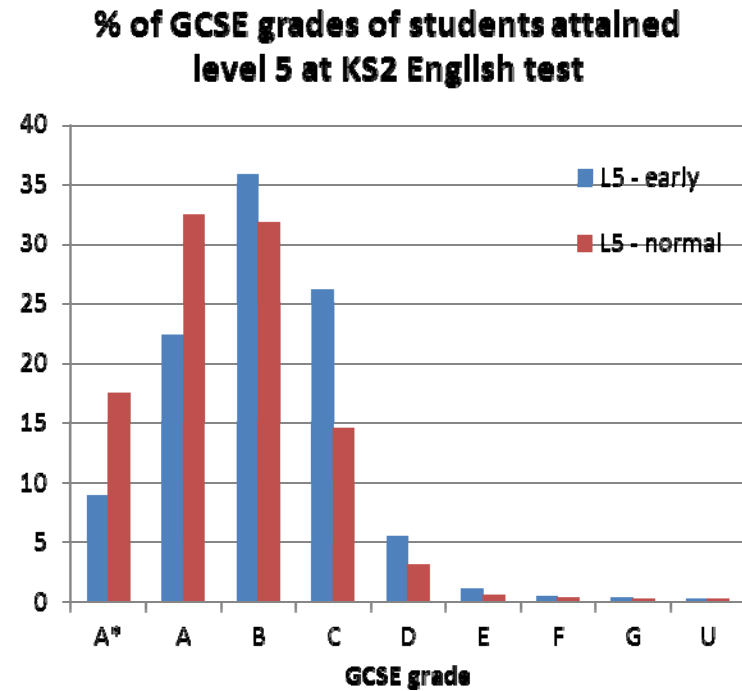
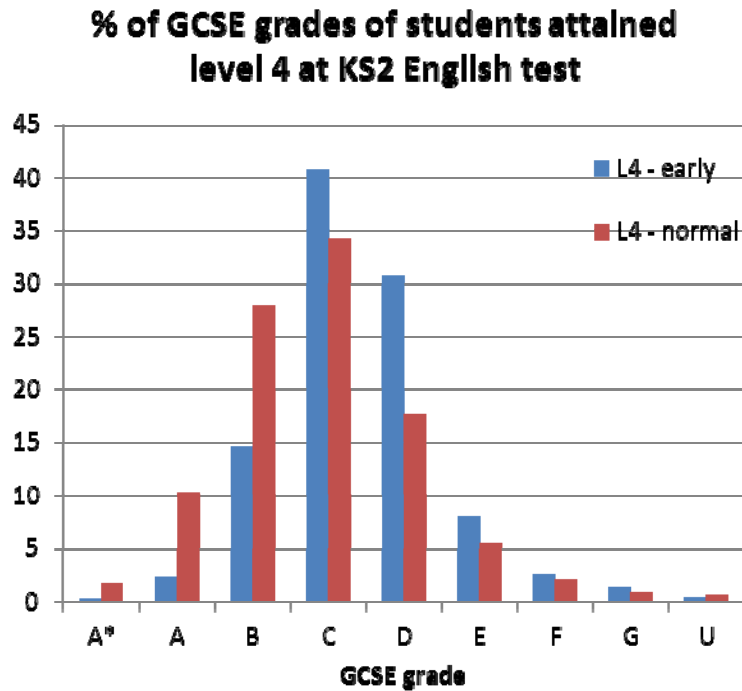
Relationship between prior attainment on KS2 tests and GCSE grade

- Pupils' attainment at KS2 tests were linked to their OCR GCSE grade outcome
- In KS2 tests, pupils attained levels from 2 to 5 and they were expected to reach level 4 by the end of KS2
- More than 80% of them attained levels 4 and 5 and analysis on them are presented in subsequent slides.

Grade outcome of early and normal entry candidates by level of KS2 Eng. test results – English 1900 in 2011

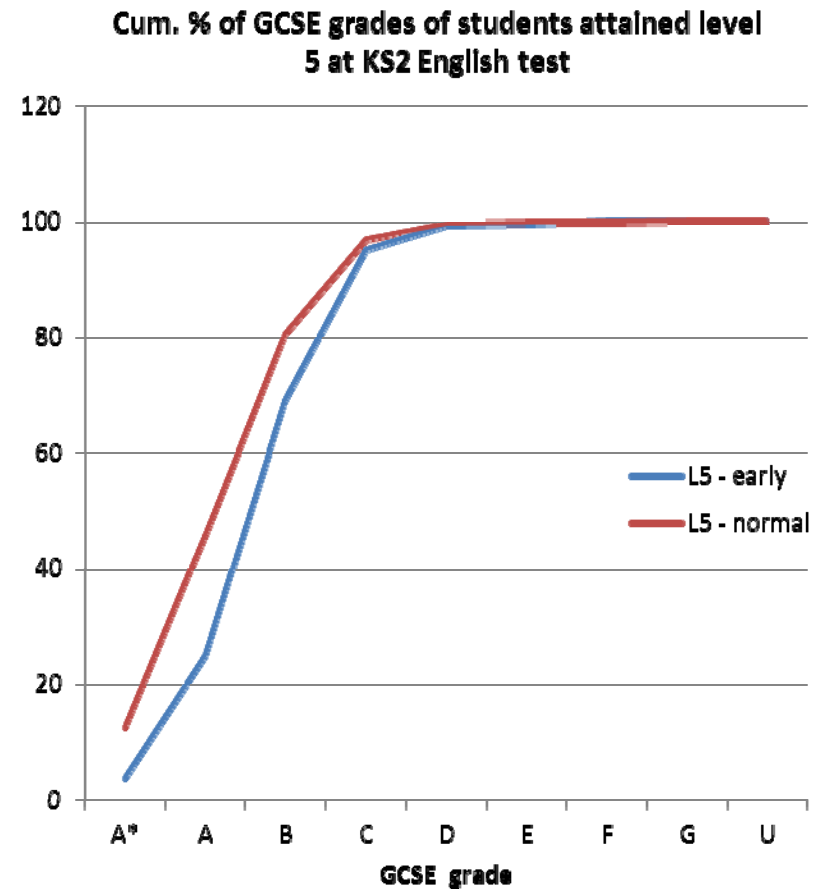
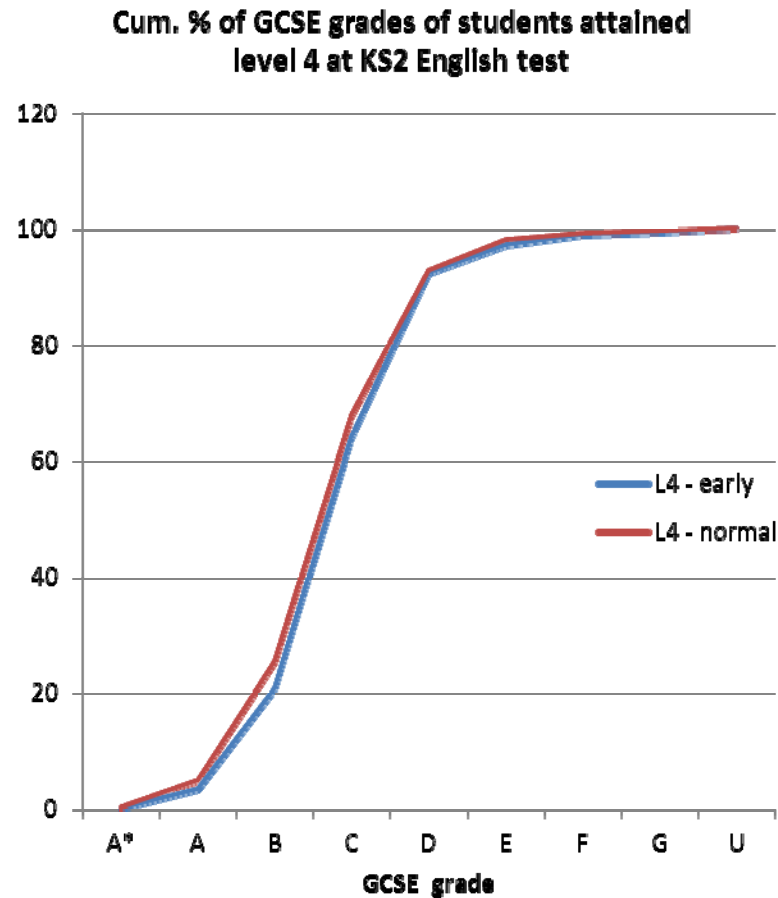


Grade outcomes of early and normal entry candidates by level of KS2 Eng. test results – English 1900 in 2011



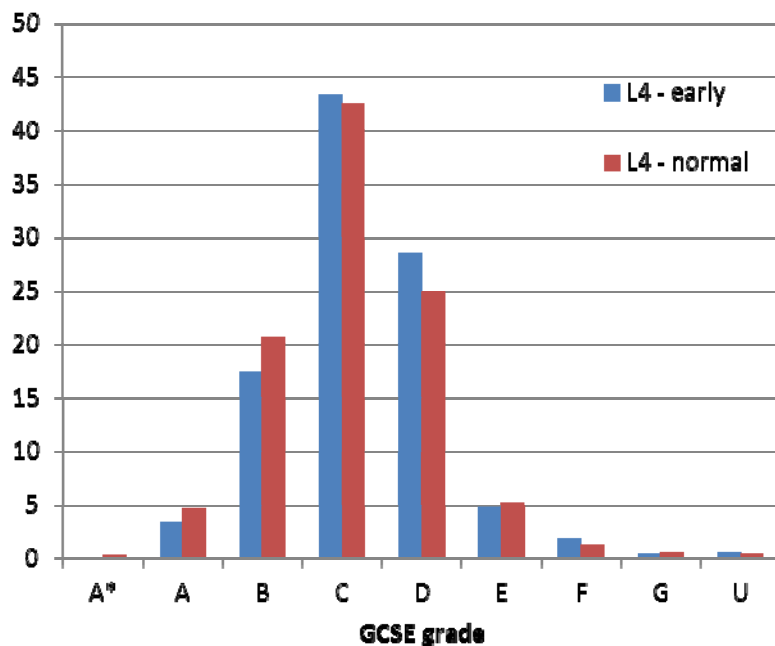
KS2 English test	Level 4		Level 5	
Type of entry	Early	Normal	Early	Normal
GCSE grade point average	4.6	5.1	6.0	6.6
Δ	0.5		0.6	

Grade outcomes of early and normal entry candidates by level of KS2 Eng. test results – Eng. J350/J355 in 2012

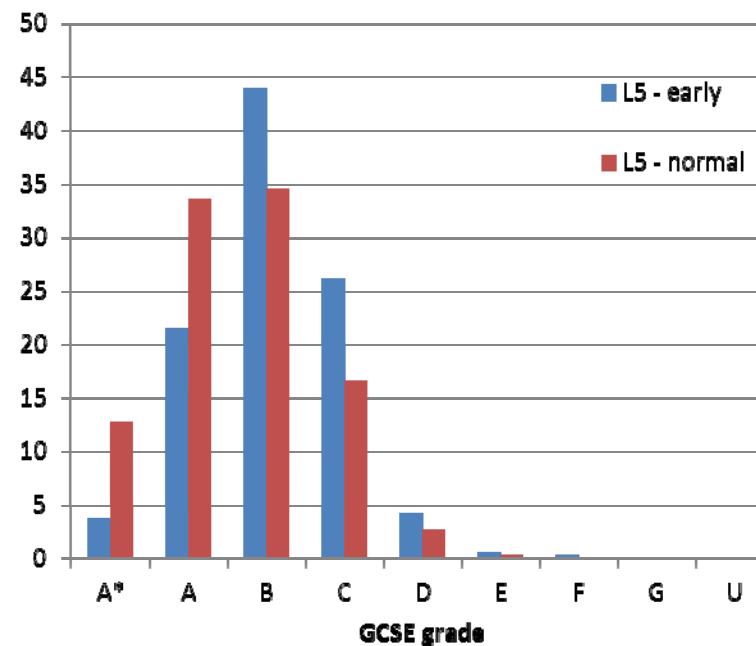


Grade outcomes of early and normal entry candidates by level of KS2 Eng. test results – Eng. J350/J355 in 2012

% of GCSE grades of students attained level 4 at KS2 English test

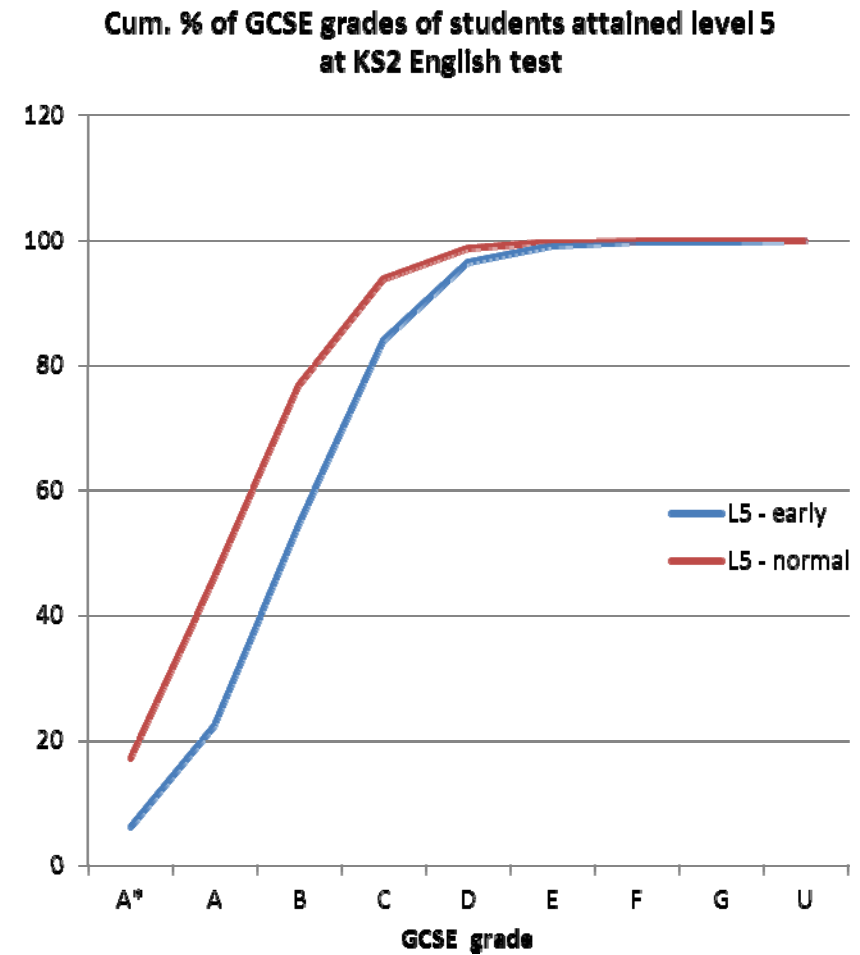
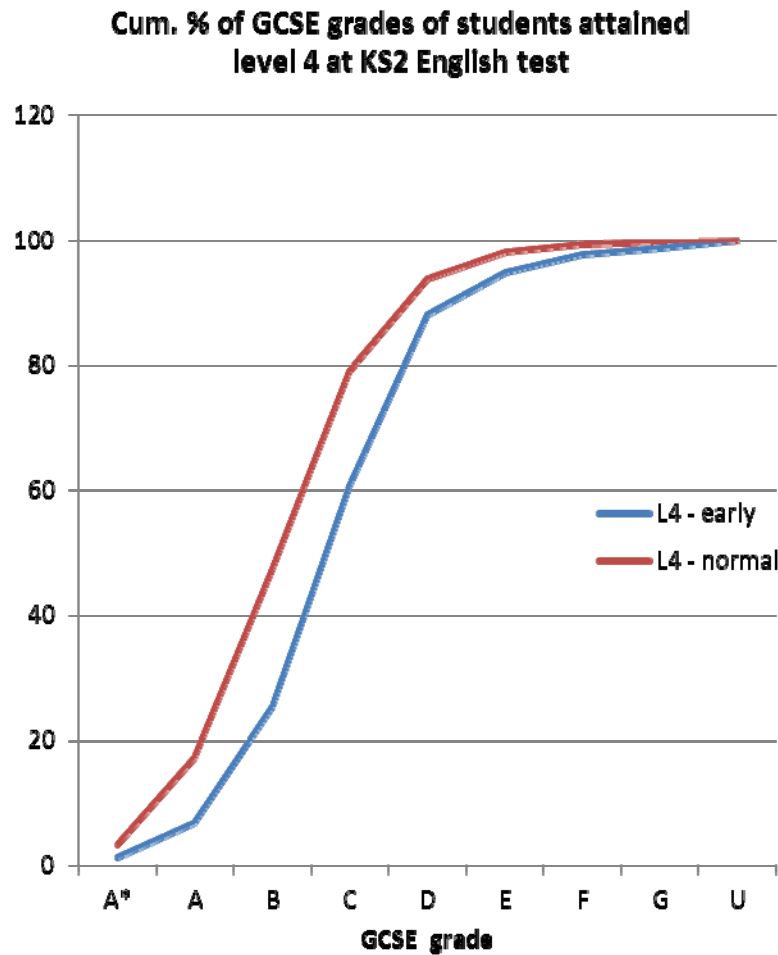


% of GCSE grades of students attained level 5 at KS2 English test



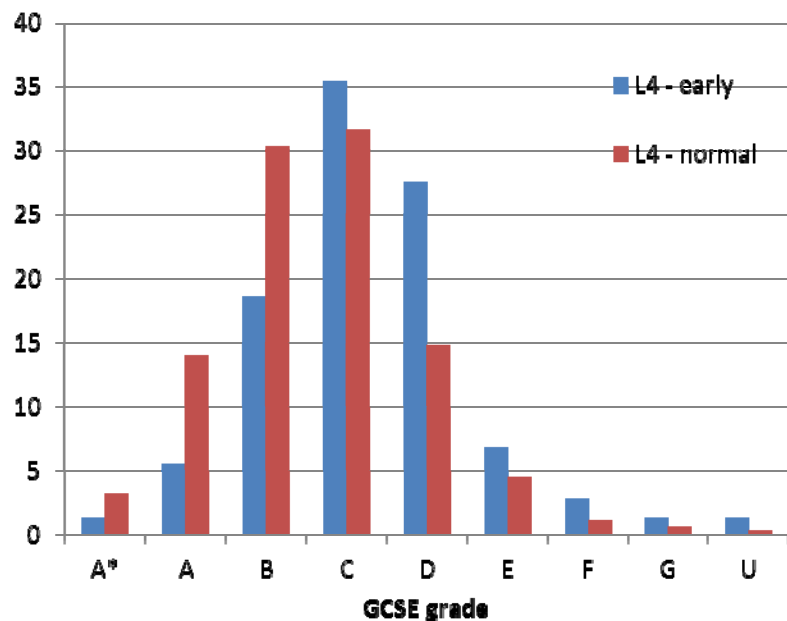
KS2 English test	Level 4		Level 5	
Type of entry	Early	Normal	Early	Normal
GCSE grade point average	4.8	4.9	5.9	6.4
Δ	0.1		0.5	

Grade outcome of early and normal entry candidates by level of KS2 Eng. test results – Eng Lit 1901 in 2011

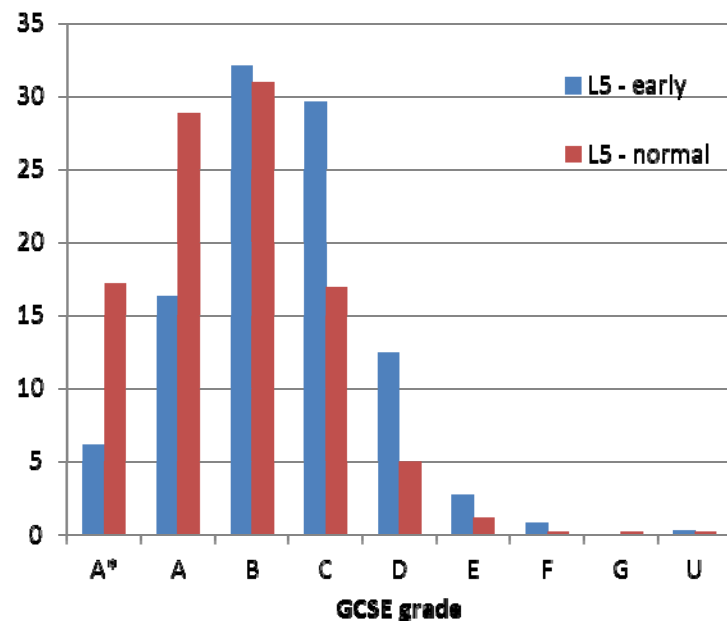


Grade outcomes of early and normal entry candidates by level of KS2 Eng. test results – Eng Lit 1901 in 2011

% of GCSE grades of students attained level 4 at KS2 English test

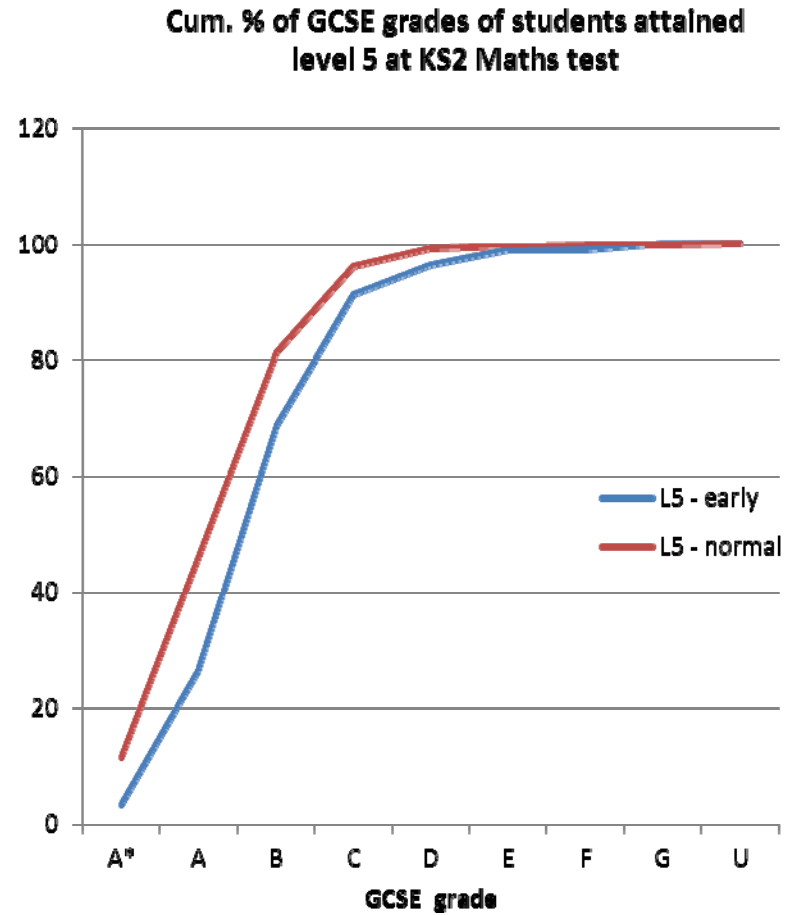
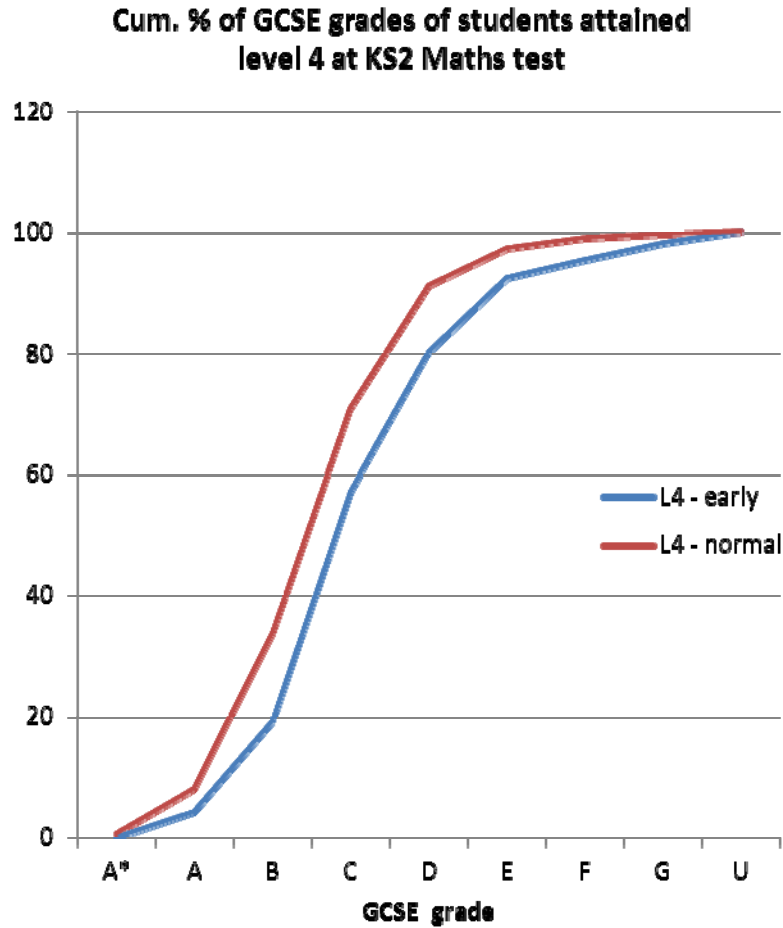


% of GCSE grades of students attained level 5 at KS2 English test



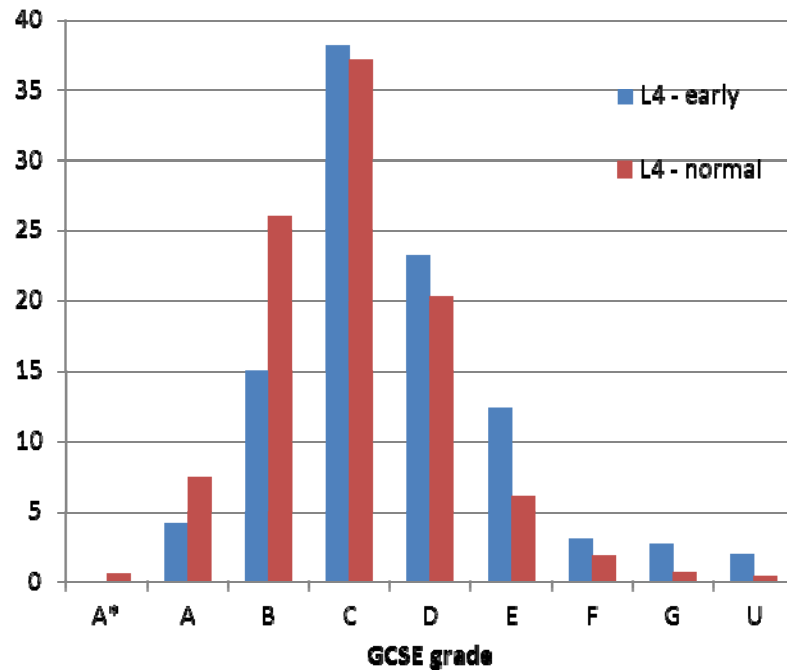
KS2 English test	Level 4		Level 5	
Type of entry	Early	Normal	Early	Normal
GCSE grade point average	4.4	5.2	5.7	6.4
Δ	0.8		0.7	

Grade outcomes of early and normal entry candidates by level of KS2 Eng. test results – Eng Lit J360 in 2012

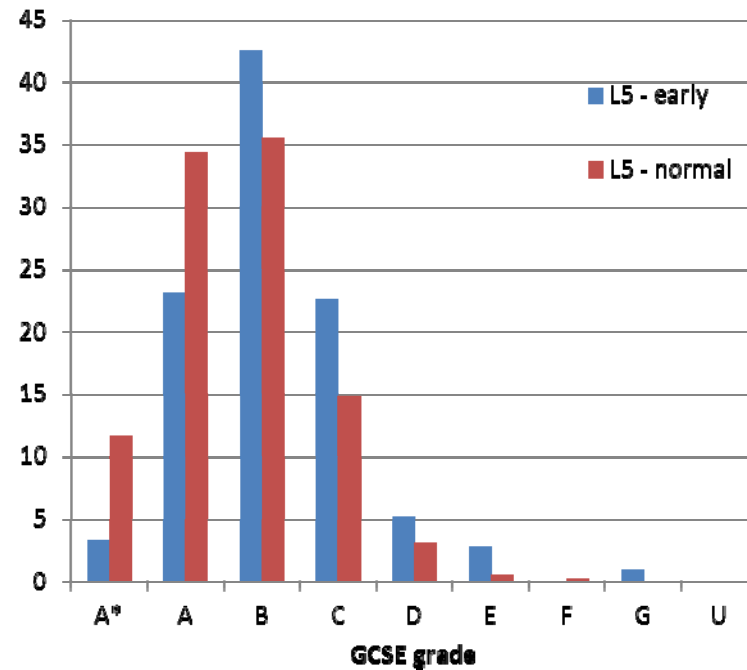


Grade outcomes of early and normal entry candidates by level of KS2 Eng. test results – Eng Lit J360 in 2012

% of GCSE grades of students attained level 4 at KS2 Maths test

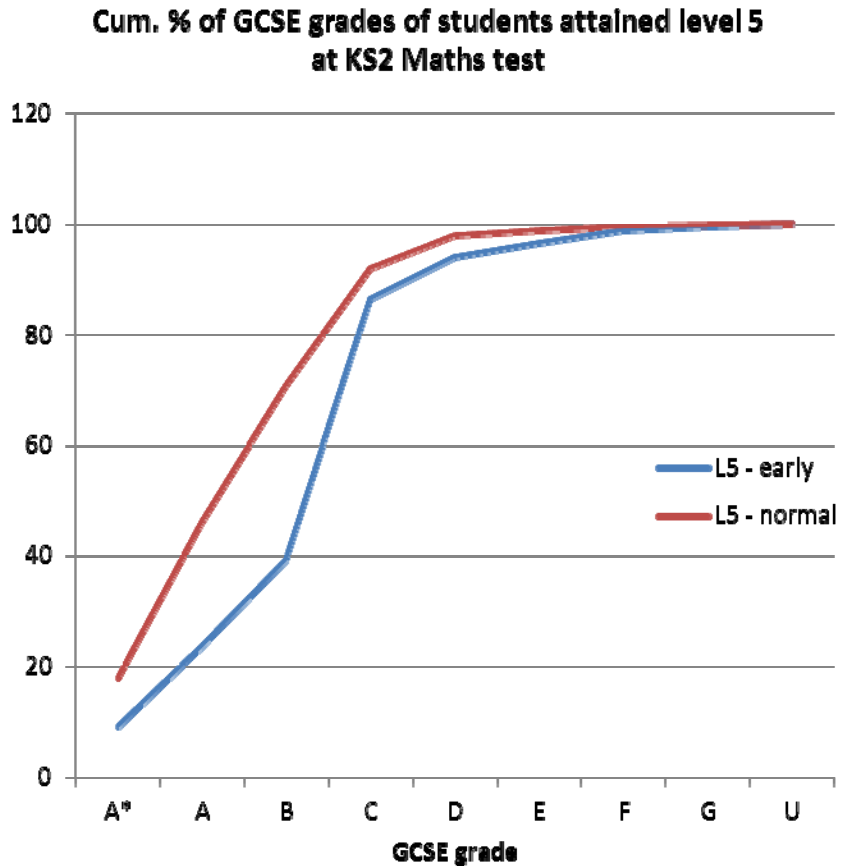
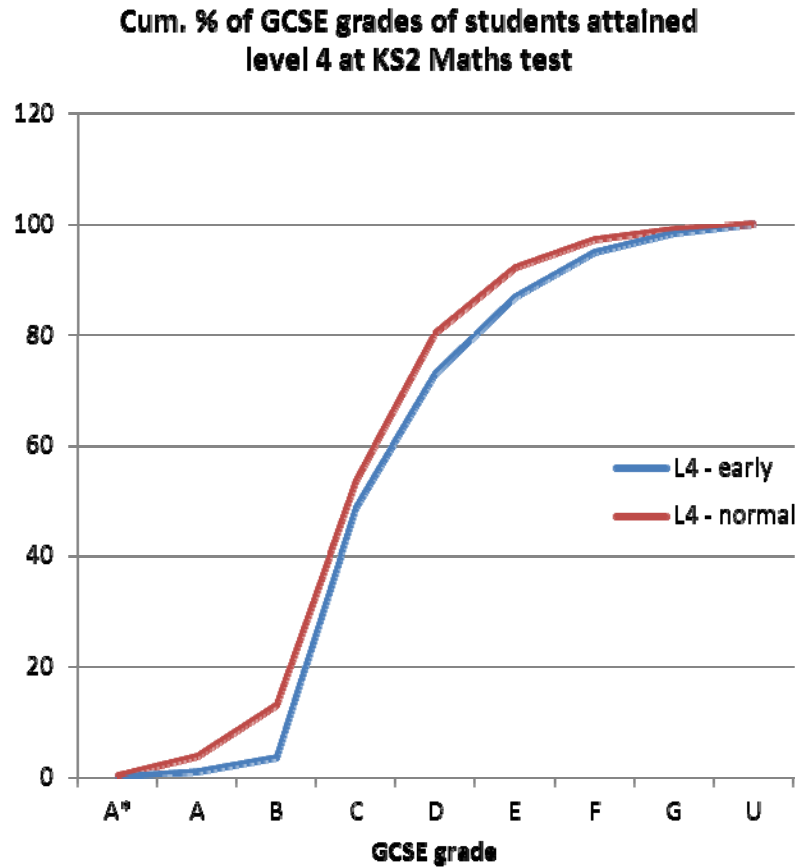


% of GCSE grades of students attained level 5 at KS2 Maths test

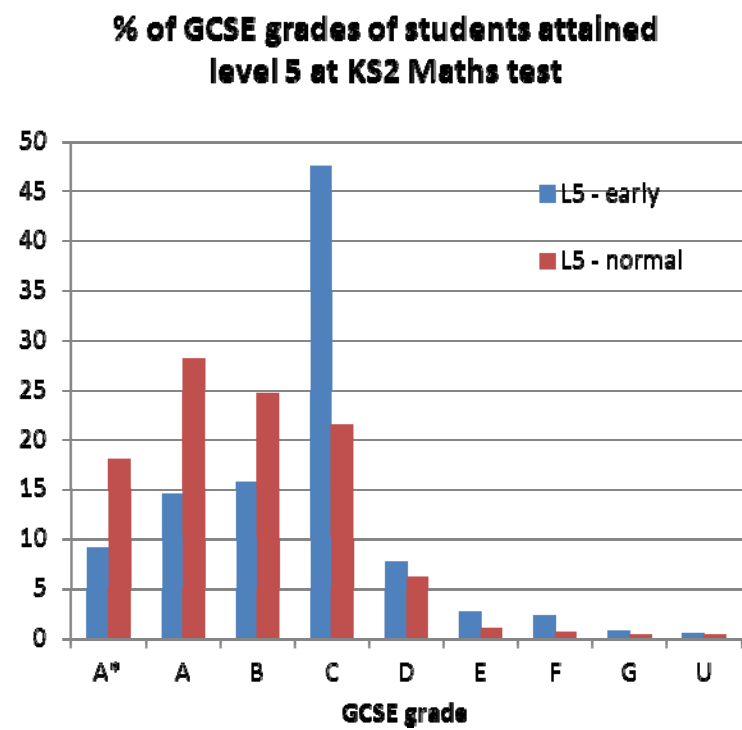
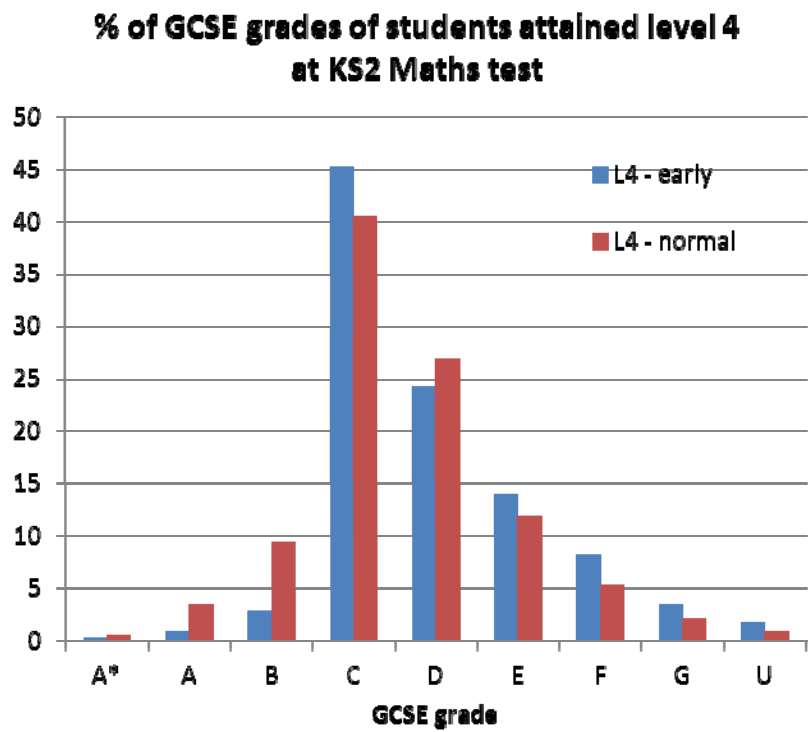


KS2 English test	Level 4		Level 5	
Type of entry	Early	Normal	Early	Normal
GCSE grade point average	4.5	5.0	5.8	6.3
Δ	0.5		0.5	

Grade outcomes of early and normal entry candidates by level of KS2 Maths test results – Maths J512 in 2011

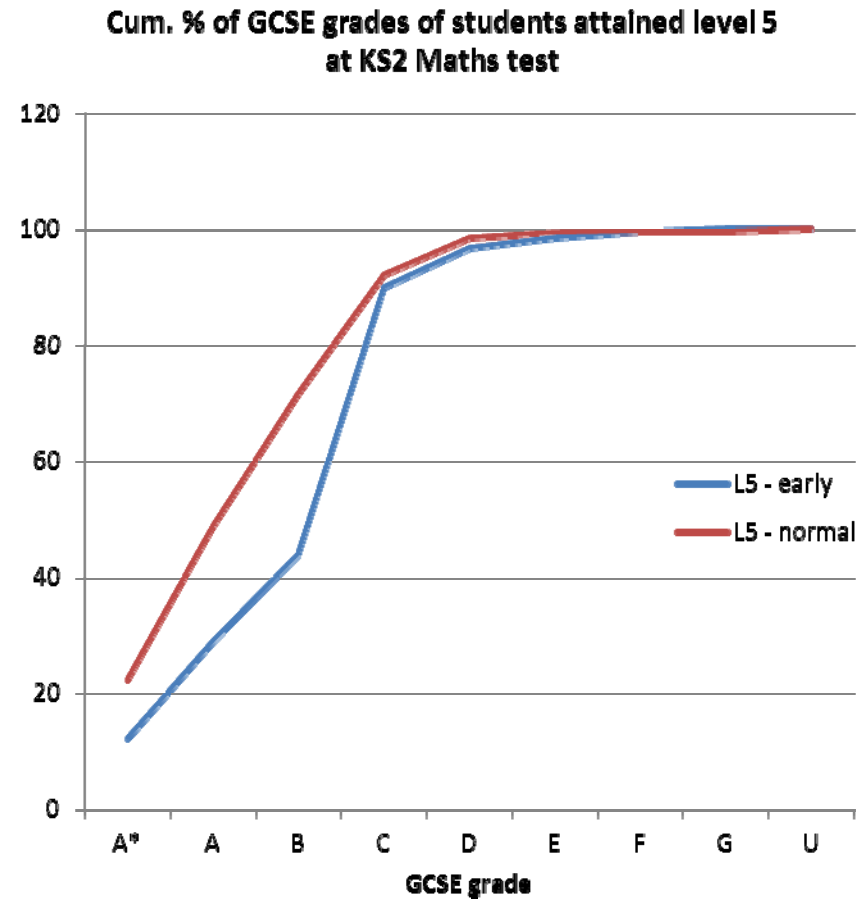
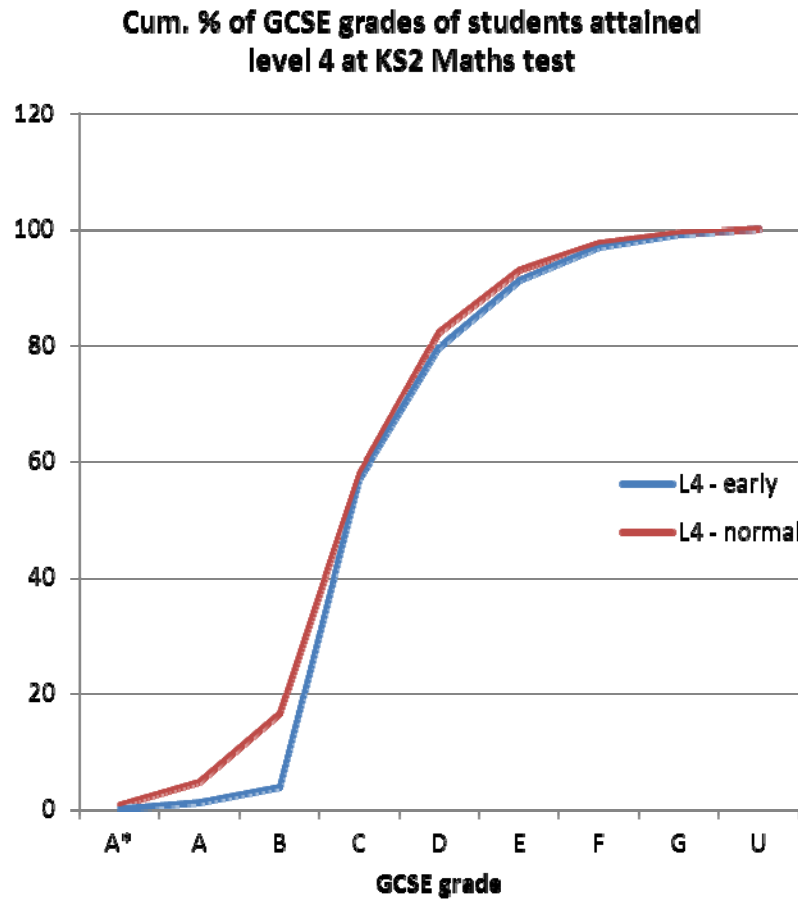


Grade outcomes of early and normal entry candidates by level of KS2 Maths test results – Maths J512 in 2011



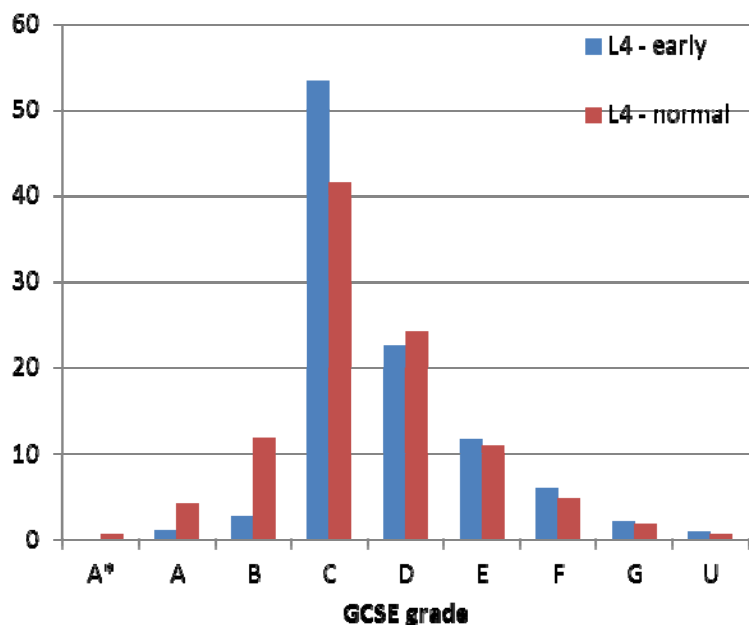
KS2 Maths test	Level 4		Level 5	
Type of entry	Early	Normal	Early	Normal
GCSE grade point average	4.1	4.4	5.5	6.2
Δ	0.3		0.7	

Grade outcomes of early and normal entry candidates by level of KS2 Maths test results – Maths J567 in 2012

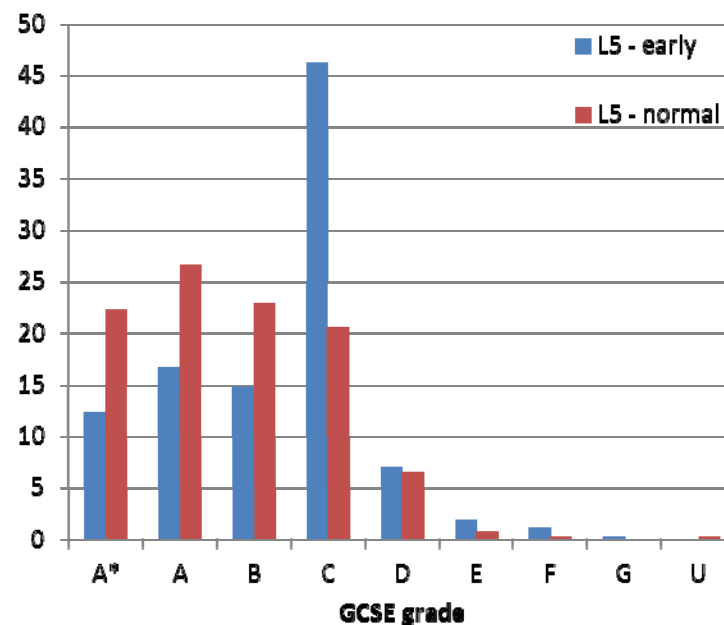


Grade outcomes of early and normal entry candidates by level of KS2 Maths test results – Maths J567 in 2012

% of GCSE grades of students attained level 4 at KS2 Maths test

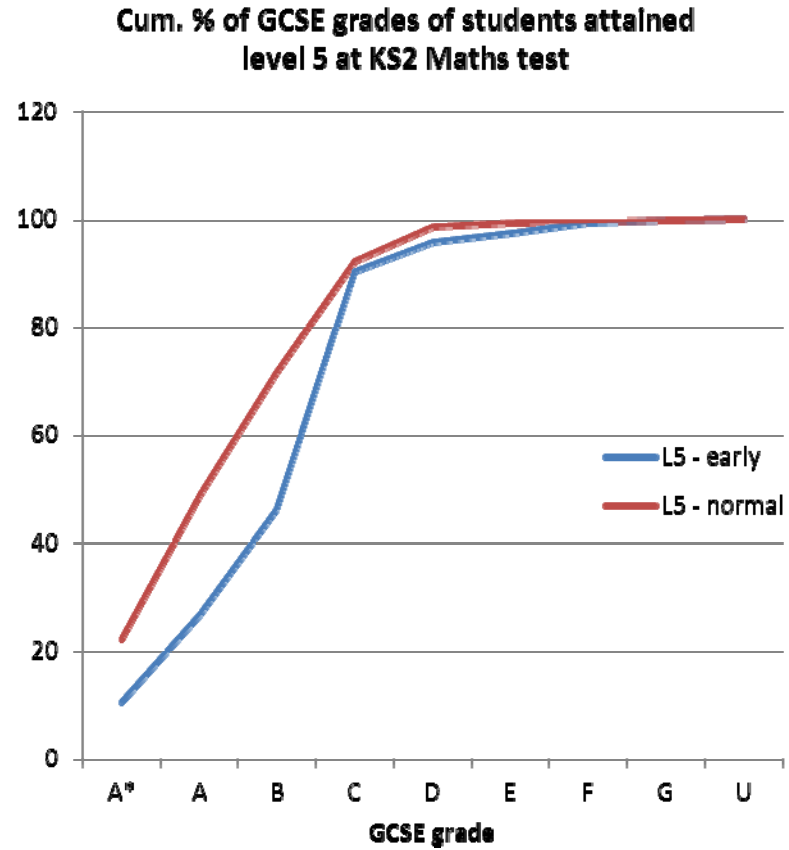
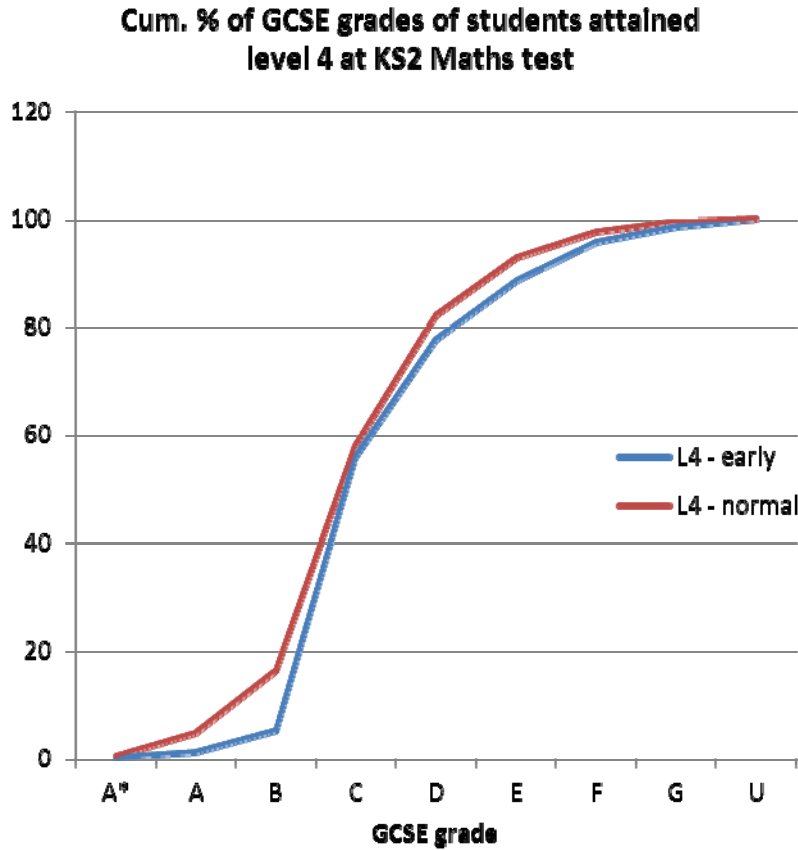


% of GCSE grades of students attained level 5 at KS2 Maths test



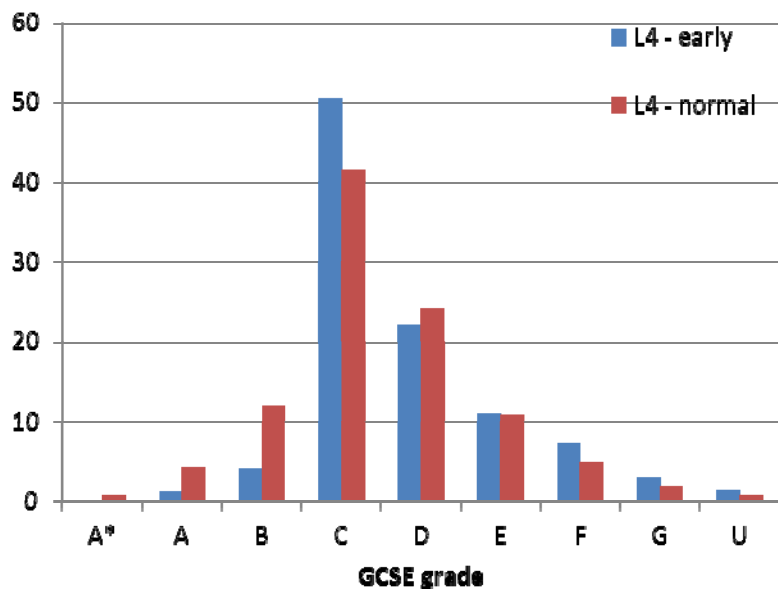
KS2 Maths test	Level 4		Level 5	
Type of entry	Early	Normal	Early	Normal
GCSE grade point average	4.3	4.5	5.7	6.3
Δ	0.2		0.6	

Grade outcomes of early and normal entry candidates by level of KS2 Maths test results – Maths J512/J567 in 2012

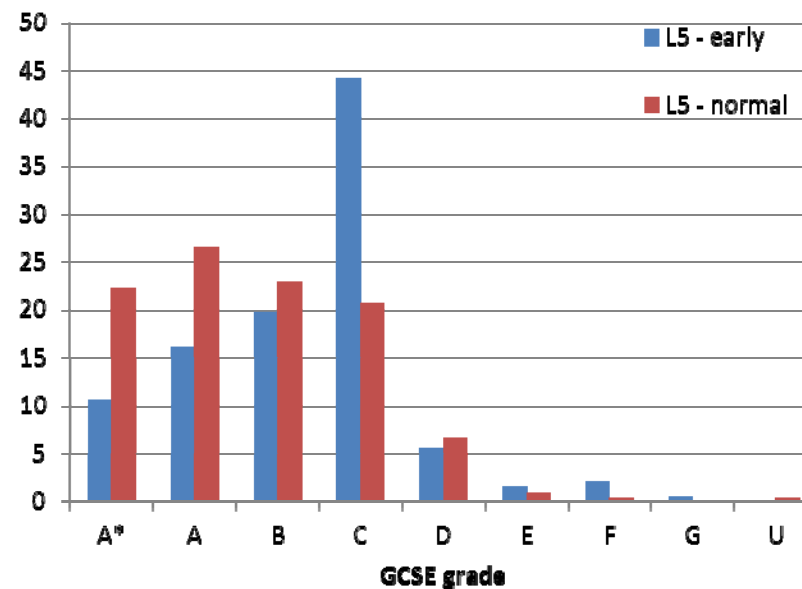


Grade outcomes of early and normal entry candidates by level of KS2 Maths test results – Maths J512/J567 in 2012

% of GCSE grades of students attained level 4 at KS2 Maths test



% of GCSE grades of students attained level 5 at KS2 Maths test



KS2 Maths test	Level 4		Level 5	
Type of entry	Early	Normal	Early	Normal
GCSE grade point average	4.2	4.5	5.7	6.3
Δ	0.3		0.6	

Summary

- Scrapping of KS3 tests gave rise to large proportion of early entries in past years
- GCSE grade outcome of normal entry candidates was better than that of early entry pupils
- Re-sit likely to lead to grade improvement.
- Significant negative impact on brightest pupils at KS2 when they entered GCSE exams early
- Longer data series needed to analyse effect on new specs

Questions are welcome