

Cambridge Assessment Archives:



CAMBRIDGE ASSESSMENT

Continuity and Change



UNIVERSITY of CAMBRIDGE
Local Examinations Syndicate

Gillian Cooke
Group Archivist
CAN Seminar, Oct 2013

Cambridge Assessment Archives: Continuity and Change

- *University, Syndics and Examiners*
- Examinations - Administration and Technology
- Expansion – Regions and Overseas

University and Vice Chancellor



CAMBRIDGE ASSESSMENT



8. Signing of cheques by the V.C. Schemes mentioned to relieve V.C. Sec. to sign up to £100 except salary cheques.

9. Geography in H.S.C. ? Consult Geog. Board ^{Not at this stage}
Joint meeting ^{Lit Subj. NatSci.} a Geographers' } refer to Nat. Sci. ~~CPA~~

The Syndicate



CAMBRIDGE ASSESSMENT

" The Local Examinations Syndicate are of opinion that the University Examining Bodies are in a special position, in virtue of their long experience and wide membership, to offer advice on the merits and deficiencies of the present system of external examinations for secondary schools which is now under consideration by the 'Norwood Committee' (Committee on Curriculum and Examinations).

They feel that they may be able to comment usefully upon arguments advanced in favour of the abolition of the School Certificate Examination, if this is indeed contemplated.

The Syndicate, bearing in mind their responsibility to the University, asks for an assurance that the official views of the University will be sought and taken into account by the Committee on Curriculum and Examinations or by the Board of Education before an official decision is taken in this matter."

Syndics and Examiners



CAMBRIDGE ASSESSMENT

LIST OF SYNDICS.

The Syndicate appointed Feb. 17, in pursuance of the foregoing rules, was composed as follows:

	Rev. H. Philpott, D.D. Master of St Catharine's College, Vice-Chancellor.
Until Nov. 12, 1858.	Rev. W. Emery, B.D. Fellow and Tutor of Corpus Christi College.
	Rev. J. B. Lightfoot, M.A. Fellow and Tutor of Trinity College.
	George D. Liveing, M.A. Fellow and Lecturer of St John's College.
	George E. Paget, M.D. late Fellow of Gonville and Caius College.
Until Nov. 12, 1859.	Rev. William H. Bateson, D.D. Master of St John's College.
	Rev. W. M. Campion, M.A. Fellow and Tutor of Queens' College.
	J. Lempriere Hammond, M.A. Fellow and Assistant Tutor of Trinity College.
	Henry J. Roby, M.A. Fellow of St John's College.
Until Nov. 12, 1860.	Rev. E. Harold Browne, B.D. Emmanuel College, Norrisian Professor of Divinity.
	Rev. H. Goodwin, M.A. late Fellow of Gonville and Caius College.
	Rev. H. Latham, M.A. Fellow and Tutor of Trinity Hall.
	William Hopkins, M.A., F.R.S. St Peter's College.

The PRESENT Syndicate is composed of the last seven members of the Senate, and of the following:

Until Nov. 12, 1859.	Rev. W. H. Bateson, D.D. Master of St John's College, Vice-Chancellor.
	Rev. W. F. Witts, M.A. Fellow of King's College.
Until Nov. 12, 1861.	Rev. H. Philpott, D.D. Master of St Catharine's College.
	Rev. J. Fuller, B.D. Fellow and Tutor of Emmanuel College.
	Rev. J. Lamb, M.A. Fellow and Senior Dean of Gonville and Caius College.
	H. Montagu Butler, M.A. Fellow and Assistant Tutor of Trinity College.

LIST OF EXAMINERS.

1858.

<i>Preliminary Subjects.</i>	Rev. J. Lamb, M.A. Fellow and Senior Dean of Gonville and Caius College.
	Rev. S. G. Phear, M.A. Fellow and Tutor of Emmanuel College.
	H. Montagu Butler, M.A. Fellow and Assistant Tutor of Trinity College.
<i>Religious knowledge.</i>	Rev. E. Harold Browne, B.D. Emmanuel College, Norrisian Professor of Divinity.
	Rev. J. B. Lightfoot, M.A. Fellow and Tutor of Trinity College.
<i>English.</i>	Rev. J. P. Norris, M.A. late Fellow of Trinity College, H. M. Inspector of Schools.
	H. J. Roby, M.A. Fellow of St John's College.
	A. A. VanSittart, M.A. late Fellow of Trinity College.
<i>Latin and Greek.</i>	J. Lempriere Hammond, M.A. Fellow and Assistant Tutor of Trin. College.
<i>French.</i>	Hugh Godfray, M.A. St John's College.
	Rev. A. C. Clapin, B.A. St John's College.
<i>German.</i>	Rev. G. W. Pieritz, M.A. Caius College.

20

LIST OF EXAMINERS.

<i>Mathematics.</i>	Rev. Wm. Emery, B.D. Fellow and Tutor of Corpus Christi College.
	E. J. Routh, M.A. Fellow and Assistant Tutor of St Peter's College.
<i>Chemistry, Electricity, and Magnetism.</i>	G. D. Liveing, M.A. Fellow and Lecturer of St John's College.
<i>Physical Geography, Geology, Heat, Physical Optics, and Acoustics.</i>	Wm. Hopkins, M.A. F.R.S. F.G.S. St Peter's College.
	G. M. Humphry, M.B. Downing College.
<i>Comparative Anatomy and Zoology.</i>	C. C. Babington, M.A. F.R.S. F.G.S. St John's College.
<i>Botany.</i>	Richard Redgrave, Esq. R.A.
<i>Drawing.</i>	Wm. Sterndale Bennett, Mus. D. St John's College, Professor of Music.
	Rev. H. Latham, M.A. Fellow and Tutor of Trinity Hall.
<i>Music.</i>	Edward Headlam, M.A. Fellow of St John's College, Civil Service Commission.
<i>Additional Examiners.</i>	

The following were appointed by the Syndicate to conduct the Examination at the several places:

<i>Cambridge.</i>	Rev. W. Emery.
<i>Birmingham.</i>	Rev. S. G. Phear.
<i>Brighton.</i>	Rev. H. Latham.
<i>Bristol.</i>	Rev. J. Lamb.
<i>Grantham.</i>	E. J. Routh, Esq.*
<i>Liverpool.</i>	G. D. Liveing, Esq.
<i>London.</i>	A. A. VanSittart, Esq.
	Edward Headlam, Esq.
<i>Norwich.</i>	H. Montagu Butler, Esq.

* Mr Routh being prevented from conducting the Examination, the Rev. James Porter, M.A., Fellow and Lecturer of St Peter's College was appointed in his stead.

Examining



CAMBRIDGE ASSESSMENT

127 English Section Senior				128 English Section Senior			
(2011-12)				for English Composition see p. 184			
	% failed		% distinguished	Full marks	Standard for passing		for distinction
1882	22	B 31.5 C 17.3	44.848943		22 4 2 subjects other than comp ²		55
1883	32.4	54.4	7.9	3.5	120	20 4 2 subjects other than comp ²	52
1884	25.85	80.25	12.35	4.45	120	20 4 2 subjects other than comp ²	54
1885	24.75 22.75	10.3	16.71	4.36	115	16 passing in two subjects	50
1886	22	12.5	20.21	3.5	115	18 in 2 or 20 in 3	54 [†]
1887	2.8	1.53	22.2	2	115	17, passing in two subjects	52
1888	26	7) 179 (26)	8) 24.5 (3)	2.3	115	18, " " " "	52
1889	22	8) 201 (25)	9) 27.2 (3)	2.7	115	18 " " " "	51
1890	23	9) 224 (25)	10) 29.2 (2.9)	2	115	17 " " " "	48
1891	26	10) 250 (25)	11) 31.2 (3)	2	115	17 " " " "	48
1892	24	10 years averages		1.8	115	17 " " " " save (14) if fail by only 5	4.8
1893	24	24.4	2.71	1.6	115	17 " " " " ditto * in other	4.8
1894	22	24.0	2.51	2.8	115	19 " " " " save (15) if ditto	50
1895	23	24.0	2.3	2.3	115	19 " " " " 2 more than sum of minima in 2 subjects; marks above 4 in comp ² to count towards this	63
1896	16	23.4	2.2	2.5	140	ditto	64
1897					140	ditto	

[†] Examiners were equally divided as to whether or not there should be a difference of standard according to number of subjects taken.
* Thomas points out that this rule leads to a certain degree of injustice.

1902	History of Br. Emp. S.	{ marked papers without having read schedule
1903	History of Br. Emp. S.	{ most of the first draft of his paper outside the set period - in other respects instructions disregarded

Examiners



We spent as much as three weeks in Downing College doing a review. Nowadays, if you're required for more than 3 – 4 days, it's unusual. PK

Cambridge Assessment Archives: Continuity and Change

- University, Syndics and Examiners
- *Examinations - Administration and Technology*
- Expansion – Regions and Overseas

15. State with regard to each of the following battles the date, the combatants, and the results:—Bunker's Hill, Camperdown, Minden, Plassey, Quiberon Bay.

16. Who was John Wilkes? With what agitations and reforms was he connected?

17. Why did England and France go to war in 1793?

18. Describe **either** the Waterloo Campaign **or** the work of Canning in the management of foreign affairs.

FRIDAY, 13 December 1907. 12 to 1½ or 12½ to 2.

History of the British Empire

1763 TO 1878 A.D.

1. What grievances had the American colonies against the mother country at the time when they asserted their independence?

2. Explain briefly the causes of

- (i) the Indian Mutiny;
- (ii) the Trekking of the Boers from the Cape Colony.

3. Describe briefly some important achievement for which each of the following men is noted: Admiral Rodney, Warren Hastings, Lord Dalhousie, Lord Durham, Sir George Grey.

4. What provinces made up the Dominion of Canada in 1878? Which of them were founded after 1763, and in what circumstances?

5. What is meant by colonial self-government? Name four colonies that enjoyed self-government in 1878.

6. Write short notes on **three** of the following: (i) the abolition of slavery; (ii) the abolition of transportation of convicts; (iii) the New Zealand Company; (iv) the gold discoveries in Australia.

FRIDAY, 13 December 1907. 12 to 1½ or 12½ to 2

Roman History (B.C. 133 to 44)

Give dates throughout.

1. Describe the work and character of Gaius Gracchus.

2. With what objects in view did Mithradates engage in his struggle with Rome? State briefly the main events in the third Mithradatic war (74—63 B.C.).

3. State what you know, in relation to the history of the period, of **two** of the following, namely, M. Livius Drusus (the younger)—Spartacus—Cato—Clodius.

4. State what you know of the work of Sulla as dictator. How much of it was lasting?

5. Give an account of

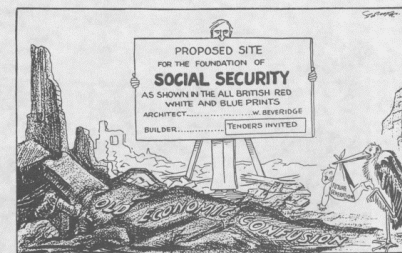
either (a) the conspiracy of Catiline;
or (b) the invasion of the Cimbri and Teutons.

6. Sketch in brief outline the career of Caesar from the battle of Pharsalia to 44 B.C.



CAMBRIDGE ASSESSMENT

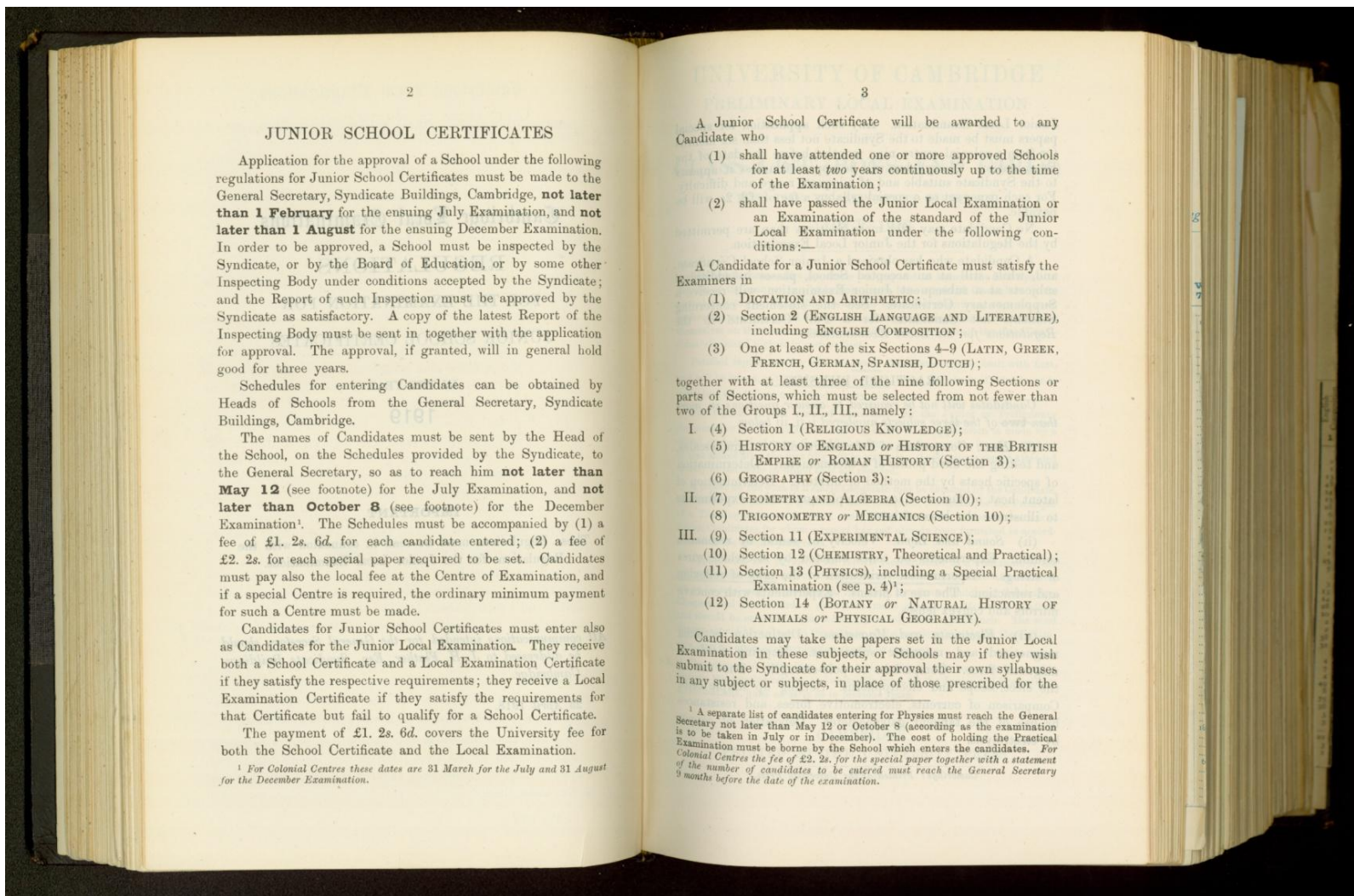
The Cambridge Locals



A cartoon printed in the 'Daily Express' in 1943.

- (a) Look carefully at the cartoon.
- (i) Why is W. Beveridge described as the 'architect' of Social Security? [1]
 - (ii) Explain the term 'Social Security' as used in the cartoon. [3]
- (b) When the war ended in 1945, why was the idea of a 'welfare state' so popular amongst the British people? [6]
- (c) How successful were the Labour Governments of 1945–51 in creating a 'welfare state'? [15]

1918 Regulations – First year of School Certificate



JUNIOR SCHOOL CERTIFICATES

Application for the approval of a School under the following regulations for Junior School Certificates must be made to the General Secretary, Syndicate Buildings, Cambridge, **not later than 1 February** for the ensuing July Examination, and **not later than 1 August** for the ensuing December Examination. In order to be approved, a School must be inspected by the Syndicate, or by the Board of Education, or by some other Inspecting Body under conditions accepted by the Syndicate; and the Report of such Inspection must be approved by the Syndicate as satisfactory. A copy of the latest Report of the Inspecting Body must be sent in together with the application for approval. The approval, if granted, will in general hold good for three years.

Schedules for entering Candidates can be obtained by Heads of Schools from the General Secretary, Syndicate Buildings, Cambridge.

The names of Candidates must be sent by the Head of the School, on the Schedules provided by the Syndicate, to the General Secretary, so as to reach him **not later than May 12** (see footnote) for the July Examination, and **not later than October 8** (see footnote) for the December Examination¹. The Schedules must be accompanied by (1) a fee of £1. 2s. 6d. for each candidate entered; (2) a fee of £2. 2s. for each special paper required to be set. Candidates must pay also the local fee at the Centre of Examination, and if a special Centre is required, the ordinary minimum payment for such a Centre must be made.

Candidates for Junior School Certificates must enter also as Candidates for the Junior Local Examination. They receive both a School Certificate and a Local Examination Certificate if they satisfy the respective requirements; they receive a Local Examination Certificate if they satisfy the requirements for that Certificate but fail to qualify for a School Certificate.

The payment of £1. 2s. 6d. covers the University fee for both the School Certificate and the Local Examination.

¹ For Colonial Centres these dates are 31 March for the July and 31 August for the December Examination.

A Junior School Certificate will be awarded to any Candidate who

- (1) shall have attended one or more approved Schools for at least *two* years continuously up to the time of the Examination;
- (2) shall have passed the Junior Local Examination or an Examination of the standard of the Junior Local Examination under the following conditions:—

A Candidate for a Junior School Certificate must satisfy the Examiners in

- (1) DICTATION AND ARITHMETIC;
- (2) Section 2 (ENGLISH LANGUAGE AND LITERATURE), including ENGLISH COMPOSITION;
- (3) One at least of the six Sections 4–9 (LATIN, GREEK, FRENCH, GERMAN, SPANISH, DUTCH);

together with at least three of the nine following Sections or parts of Sections, which must be selected from not fewer than two of the Groups I., II., III., namely:

- I. (4) Section 1 (RELIGIOUS KNOWLEDGE);
- (5) HISTORY OF ENGLAND *or* HISTORY OF THE BRITISH EMPIRE *or* ROMAN HISTORY (Section 3);
- (6) GEOGRAPHY (Section 3);
- II. (7) GEOMETRY AND ALGEBRA (Section 10);
- (8) TRIGONOMETRY *or* MECHANICS (Section 10);
- III. (9) Section 11 (EXPERIMENTAL SCIENCE);
- (10) Section 12 (CHEMISTRY, Theoretical and Practical);
- (11) Section 13 (PHYSICS), including a Special Practical Examination (see p. 4)¹;
- (12) Section 14 (BOTANY *or* NATURAL HISTORY OF ANIMALS *or* PHYSICAL GEOGRAPHY).

Candidates may take the papers set in the Junior Local Examination in these subjects, or Schools may if they wish submit to the Syndicate for their approval their own syllabuses in any subject or subjects, in place of those prescribed for the

¹ A separate list of candidates entering for Physics must reach the General Secretary not later than May 12 or October 8 (according as the examination is to be taken in July or in December). The cost of holding the Practical Examination must be borne by the School which enters the candidates. For Colonial Centres the fee of £2. 2s. for the special paper together with a statement of the number of candidates to be entered must reach the General Secretary 3 months before the date of the examination.

The General Certificate in Education



CAMBRIDGE ASSESSMENT

LIST OF SUBJECTS FOR WHICH QUESTION PAPERS ARE INCLUDED IN THIS BOOK

Latin (010/1-4)
Greek (020/1-3)
French (030/1-3)
German (040/1-3)
Spanish (050/1-3)
Italian (060/1, 2)
English (110/1-3, 210/1)
Bible Knowledge (220/1, 221/1-5)
History (230/1, 231/1, 232/1)
*Geography (250/1, 2)
Economic and Public Affairs (260/1)
Mathematics (411/1-3, 412/1, 2)
Additional Mathematics (420/1)
†General Science (510/1, 2, 520/2)
Agricultural Science (523/1, 2)
Physics (530/1-3, C)
Chemistry (540/1-3, B)
Biology (550/1, 2, D)
Physics-with-Chemistry (560/1, 2)
Art (610/1-5, 7, 8)
Music (620/1-4)
Woodwork (630/1, 2)
Metalwork (640/1-3)
Needlework (650/1, 2)
Cookery (660/1, 2)
Mechanics (710/1)
†Engineering Science (720/1)
Surveying (730/1)
Technical Drawing (740/1-3)
Commercial Subjects (750/1-4)
Commerce (751/1)
Principles of Accounts (752/1)
Navigation and Astronomy (780/1)
Navigation (781/1)

A list showing the allocation of marks for each paper and for each question in a paper is given at the end of the book.

* The Ordnance Survey Map is not included in this book. As long as the stock lasts, copies may be obtained from Syndicate Buildings, Cambridge, price 5s. each, post free. Copies of the map, without titles, will also be obtainable after the examination from the Ordnance Survey Office, Leatherhead Road, Chessington, Surrey.

† Paper 520/1 and the whole of papers 510/1, 510/2 and 720/1 are not included in this book. As long as the stock lasts, copies may be obtained from Syndicate Buildings, Cambridge, price 4s. each, post free.

72 EXAMINATION PAPERS (ADV. LEVEL AND SCHOL. LEVEL)

ECONOMIC AND PUBLIC AFFAIRS

267/2

ADVANCED LEVEL

PAPER II (NATIONAL INCOME AND OUTPUT)

(Two hours and a half)

Answer five questions.

1. Give some of the reasons why it is useful to calculate the national income.
2. Explain why the total of Personal Income normally differs from the value of the Net National Product during the same period.
3. What are the main forms of government expenditure? How are these taken into account in the calculation of the National Expenditure?
4. Explain what is meant by the term 'capital-goods', and show what part they play in making the National Output.
5. Describe the method whereby an index of retail prices can be used to reflect changes in the purchasing power of the £.
6. What is the 'balance of trade'? Does it matter if it is persistently adverse for the United Kingdom?
7. Why is it that the unpleasant and disagreeable occupations are not necessarily among the most highly paid?
8. 'The sole criterion of industrial efficiency is the rate of profit earned.' Do you agree?
9. Does an increase in the demand for a commodity necessarily bring about an increase in its price?
10. What are the advantages and disadvantages of increased 'international specialization'?

Processing Candidate Results



CAMBRIDGE ASSESSMENT

DECEMBER 1910

PRELIMINARY

Candidate	1	2	3	4	5	6	7	8	9	10	11	12	13	14	15	16	17	18	19	20	
Compulsory	160	78	150	106	158	150	148	94	121	164	163	88	121	153	80	147	117	102	97		
Religious Knowledge	59	71	73	76	30	23	70	32	58	60	60	87	87	81							
English	127	79	113	109	131	96	100	102	103	124	88	60	76	112	68	96	53	90	83	97	
History		62	64															53	50	53	
Geography	71	54	70	71	84	72	67	69	52	86	66	45	69	79	42	72	61	67	58	67	
Latin																				54	
French	88	44	21	47	87	38	18	28	61	107	65	0	70	0	43	61	77	64	57		
German																					
Geometry	44	59	69	89	60	52	55	46	73	52	31	25	64	17	49	33	49	60			
Algebra	82	52	38	96	46	48	43	57	102	50	23	27	80	3	51	20	38	39	22		
Exp. Science																					
Chemistry																					
Heat	38	13	56	58	106	44	40	32	64	36	38	28	68	10	40	10					
Botany																					
Drawing																					
Total	703	301	633	617	833	602	556	656	695	866	586	225	350	768	549	395	529	663	531		

CAMBRIDGE UNIVERSITY PRELIMINARY LOCAL EXAMINATION DECEMBER 1910

The small italic letters denote that the Candidate to whose name they are prefixed was distinguished in the following subjects respectively:—

a = Algebra *f* = French *h* = Heat
b = Botany *g* = Geography *l* = Latin
ch = Chemistry *gm* = Geometry *r* = Religious Knowledge
d = Drawing *gn* = German *sc* = Experimental Science
e = English *h* = History

N.B.—Only Students under 14 years of age are eligible for marks of distinction.
 * Satisfied the Examiners in Spoken French.
 † Satisfied the Examiners in Spoken German.

STUDENTS UNDER 14 YEARS OF AGE WHO HAVE OBTAINED HONOURS

CLASS I

Number and Centre	Name	School	Principal of School
1 Andover	<i>a, n, d</i> Chapman, R. C. G.	Andover Grammar Sch.	R. O. Bishop, M.A.
5	<i>e, g, gm, ol</i> Hoar, G. H.	—	—
10	<i>e, ol, f, ol, h, ol</i> Steele, L. G. R.	—	—
102 Blackheath	<i>f</i> Drake, E. S. †	Sch. for Sons of Missionaries, Blackheath.	W. R. Hayward, M.A.
152 Blackth. Lindisfarne	<i>l</i> Stanching, I. W.	Lindisfarne, Blackheath	A. M. Kirby, M.A.
172 Bolton	<i>e, f</i> Fraser, A. T. †	Bolton Grammar Sch.	W. G. Lipscomb, M.A.
174	<i>n</i> Holt, P. A. †	—	—
177	<i>e, f, f</i> Roberts, C. H. †	—	—
304 Brighton	<i>e, f</i> Lavington, H. C.	West Hill Preparatory Sch., Sydenham	J. A. Foster, M.A.
487 Chelsea Palace	<i>gn</i> Tinkton, T. A.	Orphan Schools, Chelsea House	J. R. Parry, M.A.
438	<i>e, h, ol</i> Ewen, F. D.	—	—
592 Douglas	<i>ch</i> Colver, J. G.	The Grammar Sch., Douglas	J. A. Bartholomew, B.Sc.

CLASS II

Number and Centre	Name	School	Principal of School
3 Andover	Denning, C. G.	Andover Grammar Sch.	R. O. Bishop, M.A.
4	Denning, A. T.	—	—
53 Bath	<i>f</i> Havaton, G. F.	King Edward's Sch., Bath	E. W. Symons, M.A.
55	<i>e, ol</i> Lawrence, V. W. J. H.	—	—
57	Pelling, C.	—	—
61 Battersea	<i>gm</i> Hill, L. G.	Leinster House Sch., Putney Hill, S.W.	G. P. Moyle, B.A.
63	Bentley, D. A.	—	—
180 Blackth. Lindisfarne	<i>f</i> Pembroke, W. A.	Lindisfarne, Blackheath	A. M. Kirby, M.A.

Another job was plotting the marks on graphs for calculating the grade boundaries. We had a sheet of graph paper and a pencil and two people would sit somewhere quiet because you had to really concentrate P.D

Accounts



CAMBRIDGE ASSESSMENT

Same sorts of issues... Still use teachers, still mark them, we still have to pay them, we still have the issues about that sort of thing. BF 2013

Account	1932	1933	1932	1933																																																																																																																																																																																												
<i>Proficiency in English</i>																																																																																																																																																																																																
1932	<table border="1"> <tr> <td colspan="2">To Examiners:</td> <td></td> <td></td> <td></td> </tr> <tr> <td>Setting</td> <td>M.L. 16</td> <td>10</td> <td></td> <td></td> </tr> <tr> <td>Marking</td> <td>M.L. 22</td> <td>5</td> <td>6</td> <td></td> </tr> <tr> <td></td> <td></td> <td></td> <td>38</td> <td>15</td> </tr> <tr> <td>Printing:</td> <td></td> <td></td> <td></td> <td></td> </tr> <tr> <td>Question papers</td> <td></td> <td>8</td> <td>16</td> <td></td> </tr> <tr> <td>Regulations re</td> <td></td> <td>3</td> <td>2</td> <td></td> </tr> <tr> <td>Other printing</td> <td></td> <td>4</td> <td>19</td> <td>6</td> </tr> <tr> <td></td> <td>L.F. 60</td> <td></td> <td>16</td> <td>17</td> </tr> <tr> <td>Balance transferred to overhead expenses %</td> <td>L.F. 128</td> <td></td> <td>26</td> <td>17</td> </tr> <tr> <td></td> <td></td> <td></td> <td>82</td> <td>10</td> </tr> </table>	To Examiners:					Setting	M.L. 16	10			Marking	M.L. 22	5	6					38	15	Printing:					Question papers		8	16		Regulations re		3	2		Other printing		4	19	6		L.F. 60		16	17	Balance transferred to overhead expenses %	L.F. 128		26	17				82	10	<table border="1"> <tr> <td colspan="2">By Cash received</td> <td></td> <td></td> <td></td> </tr> <tr> <td></td> <td></td> <td>25</td> <td>82</td> <td>10</td> </tr> </table>	By Cash received							25	82	10																																																																																																																													
To Examiners:																																																																																																																																																																																																
Setting	M.L. 16	10																																																																																																																																																																																														
Marking	M.L. 22	5	6																																																																																																																																																																																													
			38	15																																																																																																																																																																																												
Printing:																																																																																																																																																																																																
Question papers		8	16																																																																																																																																																																																													
Regulations re		3	2																																																																																																																																																																																													
Other printing		4	19	6																																																																																																																																																																																												
	L.F. 60		16	17																																																																																																																																																																																												
Balance transferred to overhead expenses %	L.F. 128		26	17																																																																																																																																																																																												
			82	10																																																																																																																																																																																												
By Cash received																																																																																																																																																																																																
		25	82	10																																																																																																																																																																																												
1933	<table border="1"> <tr> <td colspan="2">To Examiners: July</td> <td></td> <td></td> <td></td> </tr> <tr> <td>Setting</td> <td>M.L. 22</td> <td>15</td> <td></td> <td></td> </tr> <tr> <td>Marking</td> <td>M.L. 22</td> <td>26</td> <td>7</td> <td>6</td> </tr> <tr> <td></td> <td></td> <td></td> <td>41</td> <td>7</td> </tr> <tr> <td>Grants:</td> <td></td> <td></td> <td></td> <td></td> </tr> <tr> <td>Mr. Wilton</td> <td>C.O. 21</td> <td>10</td> <td></td> <td></td> </tr> <tr> <td>Mr. Jones</td> <td>C.O. 21</td> <td>4</td> <td>2</td> <td>6</td> </tr> <tr> <td>Mr. S. Hudson Brown</td> <td>C.O. 21</td> <td>7</td> <td>6</td> <td></td> </tr> <tr> <td>D. G. Masler</td> <td>C.O. 21</td> <td>10</td> <td></td> <td>5</td> </tr> <tr> <td></td> <td></td> <td></td> <td>10</td> <td></td> </tr> <tr> <td>Setting and Marking transferred from Prof %</td> <td>L.F. 90</td> <td></td> <td></td> <td></td> </tr> <tr> <td>J. R. Khan Setting & Marking Oct</td> <td>C.O. 51</td> <td>4</td> <td>10</td> <td></td> </tr> <tr> <td>M. W. A. Jones Setting & Marking at Worthington</td> <td>C.O. 51</td> <td>4</td> <td>8</td> <td>6</td> </tr> <tr> <td>J. T. Roach Setting & Marking</td> <td>C.O. 51</td> <td>4</td> <td></td> <td></td> </tr> <tr> <td>E. J. M. Beckett, Marking</td> <td>C.O. 51</td> <td>15</td> <td></td> <td></td> </tr> <tr> <td>Miss Spellicott-Worthington. Refund of Ad fee 20</td> <td>C.O. 51</td> <td>2</td> <td>1</td> <td></td> </tr> <tr> <td></td> <td></td> <td></td> <td>15</td> <td>17</td> </tr> <tr> <td>Printing:</td> <td></td> <td></td> <td></td> <td></td> </tr> <tr> <td>Question Papers</td> <td></td> <td>10</td> <td>1</td> <td>6</td> </tr> <tr> <td>Regulations</td> <td></td> <td>4</td> <td>8</td> <td></td> </tr> <tr> <td>Other printing</td> <td></td> <td>8</td> <td>13</td> <td>9</td> </tr> <tr> <td></td> <td>L.F. 60</td> <td></td> <td>23</td> <td>3</td> </tr> <tr> <td>Postage</td> <td>L.F. 39</td> <td></td> <td>1</td> <td>2</td> </tr> <tr> <td>Carriage</td> <td>M.L. 22</td> <td></td> <td>4</td> <td></td> </tr> <tr> <td>Balance transferred to overhead expenses %</td> <td>L.F.</td> <td></td> <td>28</td> <td>15</td> </tr> <tr> <td></td> <td></td> <td></td> <td>126</td> <td></td> </tr> </table>	To Examiners: July					Setting	M.L. 22	15			Marking	M.L. 22	26	7	6				41	7	Grants:					Mr. Wilton	C.O. 21	10			Mr. Jones	C.O. 21	4	2	6	Mr. S. Hudson Brown	C.O. 21	7	6		D. G. Masler	C.O. 21	10		5				10		Setting and Marking transferred from Prof %	L.F. 90				J. R. Khan Setting & Marking Oct	C.O. 51	4	10		M. W. A. Jones Setting & Marking at Worthington	C.O. 51	4	8	6	J. T. Roach Setting & Marking	C.O. 51	4			E. J. M. Beckett, Marking	C.O. 51	15			Miss Spellicott-Worthington. Refund of Ad fee 20	C.O. 51	2	1					15	17	Printing:					Question Papers		10	1	6	Regulations		4	8		Other printing		8	13	9		L.F. 60		23	3	Postage	L.F. 39		1	2	Carriage	M.L. 22		4		Balance transferred to overhead expenses %	L.F.		28	15				126		<table border="1"> <tr> <td colspan="2">By fees from teachers</td> <td></td> <td></td> <td></td> </tr> <tr> <td></td> <td></td> <td>25</td> <td>113</td> <td></td> </tr> <tr> <td></td> <td>C. J. Hassani Oct only</td> <td>C.O. 15</td> <td>10</td> <td></td> </tr> <tr> <td></td> <td></td> <td></td> <td>113</td> <td>10</td> </tr> <tr> <td>Etc.</td> <td></td> <td></td> <td></td> <td></td> </tr> <tr> <td>Worthington</td> <td>C.O. 14</td> <td>19</td> <td></td> <td></td> </tr> <tr> <td>Miss Payne Oct only</td> <td>C.O. 13</td> <td>10</td> <td></td> <td></td> </tr> <tr> <td>E. Jones</td> <td>C.O. 13</td> <td>10</td> <td></td> <td></td> </tr> <tr> <td>O. Spellicott Oct only</td> <td>C.O. 13</td> <td>1</td> <td>10</td> <td></td> </tr> <tr> <td>J. Smith</td> <td>C.O. 14</td> <td>15</td> <td></td> <td></td> </tr> <tr> <td></td> <td></td> <td>162</td> <td>5</td> <td></td> </tr> <tr> <td></td> <td></td> <td></td> <td>22</td> <td>10</td> </tr> </table>	By fees from teachers							25	113			C. J. Hassani Oct only	C.O. 15	10					113	10	Etc.					Worthington	C.O. 14	19			Miss Payne Oct only	C.O. 13	10			E. Jones	C.O. 13	10			O. Spellicott Oct only	C.O. 13	1	10		J. Smith	C.O. 14	15					162	5					22	10
To Examiners: July																																																																																																																																																																																																
Setting	M.L. 22	15																																																																																																																																																																																														
Marking	M.L. 22	26	7	6																																																																																																																																																																																												
			41	7																																																																																																																																																																																												
Grants:																																																																																																																																																																																																
Mr. Wilton	C.O. 21	10																																																																																																																																																																																														
Mr. Jones	C.O. 21	4	2	6																																																																																																																																																																																												
Mr. S. Hudson Brown	C.O. 21	7	6																																																																																																																																																																																													
D. G. Masler	C.O. 21	10		5																																																																																																																																																																																												
			10																																																																																																																																																																																													
Setting and Marking transferred from Prof %	L.F. 90																																																																																																																																																																																															
J. R. Khan Setting & Marking Oct	C.O. 51	4	10																																																																																																																																																																																													
M. W. A. Jones Setting & Marking at Worthington	C.O. 51	4	8	6																																																																																																																																																																																												
J. T. Roach Setting & Marking	C.O. 51	4																																																																																																																																																																																														
E. J. M. Beckett, Marking	C.O. 51	15																																																																																																																																																																																														
Miss Spellicott-Worthington. Refund of Ad fee 20	C.O. 51	2	1																																																																																																																																																																																													
			15	17																																																																																																																																																																																												
Printing:																																																																																																																																																																																																
Question Papers		10	1	6																																																																																																																																																																																												
Regulations		4	8																																																																																																																																																																																													
Other printing		8	13	9																																																																																																																																																																																												
	L.F. 60		23	3																																																																																																																																																																																												
Postage	L.F. 39		1	2																																																																																																																																																																																												
Carriage	M.L. 22		4																																																																																																																																																																																													
Balance transferred to overhead expenses %	L.F.		28	15																																																																																																																																																																																												
			126																																																																																																																																																																																													
By fees from teachers																																																																																																																																																																																																
		25	113																																																																																																																																																																																													
	C. J. Hassani Oct only	C.O. 15	10																																																																																																																																																																																													
			113	10																																																																																																																																																																																												
Etc.																																																																																																																																																																																																
Worthington	C.O. 14	19																																																																																																																																																																																														
Miss Payne Oct only	C.O. 13	10																																																																																																																																																																																														
E. Jones	C.O. 13	10																																																																																																																																																																																														
O. Spellicott Oct only	C.O. 13	1	10																																																																																																																																																																																													
J. Smith	C.O. 14	15																																																																																																																																																																																														
		162	5																																																																																																																																																																																													
			22	10																																																																																																																																																																																												

Developing Technology

Computerisation took off in the early 1960's ... and led to an increase in staff rather than a decrease. At first everyone worried that they would lose their jobs to computers!

RB



**UNIVERSITY OF CAMBRIDGE
LOCAL EXAMINATIONS SYNDICATE**

DATA PROCESSING MANAGER
Salary c£18,000

The University of Cambridge Local Examinations Syndicate, which is an international examining organisation, has a vacancy for a Data Processing Manager to take up appointment at an early date. The effective application of computers is of paramount importance to the Syndicate which has recently upgraded its IBM 4341 to keep pace with the increased demand for and extended use of computerised systems.

With an establishment of over 40 DP staff, the DPM will be responsible for providing a service to individuals and organisations in the UK and overseas. IDMS and personal computing have been successfully introduced over the last few years, but there is significant scope for enhancing the current configuration and for using computers both directly within the organisation and through collaborative ventures with similar bodies.

Proven man-management skills and business awareness are more important than a particular hardware background, although IBM 4300 experience is highly desirable. The ideal candidate will almost certainly be a graduate and aged 35-45, with a progressive career record in the computer industry.

Applications for the above post (3 copies) together with the names and addresses of not more than three referees, should reach the Secretary of the Syndicate not later than 16 December 1985. Additional information can be obtained by contacting:

The Secretary
Cambridge University Local Examinations Syndicate,
1 Hills Road, Cambridge CB1 2EU.
Telephone: 0223 61111

Cambridge Assessment Archives: Continuity and Change

- University, Syndics and Examiners
- Examinations - Administration and Technology
- *Expansion – Regions and Overseas*

Charting Growth



CAMBRIDGE ASSESSMENT

REPORT OF THE SYNDICATE. *Feb. 7, 1865.*

The SEVENTH ANNUAL REPORT presented to the SENATE by the Syndicate appointed to conduct the Examination of Students not Members of the University.

THE Local Examinations held last December have been the most successful hitherto held, both as regards the number of Candidates, and the percentage of those who passed. They were held at the fifteen places in which they were held the previous year, and also at four new centres, namely, Barnstaple, Hastings, Southampton, Windsor. Moreover, an examination of 6 Senior Candidates was, by the courteous aid of the Colonial Office, successfully conducted in Trinidad.

The whole number of Candidates entered was 844; 665 Juniors, and 179 Seniors. This number of Juniors is 151 more than last year, about 30 per cent. increase. In the case of the Seniors, the increase is 64, or 35 per cent. Of the whole increase, 215, 72 are due to the four new centres; the chief part therefore arises from an increase at the old centres. All share in this increase with the exception of Bristol, where there is a slight decrease. The chief increase is at Exeter and Norwich, where it is about 80 per cent., and at Cambridge, Northampton, Plymouth, Sheffield, Wolverhampton, where the increase varies from 30 to 50 per cent. The decrease at Bristol is of no importance, as the number there last year was much larger than in 1862.

The following tables shew the general result of the Examinations as compared with former years. In each there is a column which gives an average free from the uncertainty of the first 2 or 3 years.

29

UNIVERSITY OF CAMBRIDGE
LOCAL EXAMINATIONS SYNDICATE

JOINT COMMITTEE OF THE BRITISH COUNCIL
AND THE LOCAL EXAMINATIONS SYNDICATE

CAMBRIDGE EXAMINATIONS IN ENGLISH
FOR FOREIGN STUDENTS
SURVEY FOR 1944

1. The following table shows the numbers of foreign students who completed the full examination for the Certificate of Proficiency in English, the Lower Certificate in English, or the Preliminary Test in English in 1944.

Month	Proficiency		Lower		Preliminary	
	Home	Overseas	Home	Overseas	Home	Overseas
March	248	—	278	—	255	—
June	284	188	262	308	80	89
September	—	—	63	—	245	130
December	303	374	356	258	189	124
Totals for 1944	835	562	959	566	769	343
Totals for 1943	549	321	430	416	—	—

2. There were thus 1397 Proficiency candidates in 1944, compared with 861 in 1943, and 1525 Lower Certificate, compared with 846. For the two together there were 2922, compared with 1707 in 1943. There was no Preliminary Test before 1944; the addition of its 1112 candidates brings the grand total for the year to 4034. The March examinations were held for Allied Service Personnel only; the September Lower Certificate examination was a special arrangement for the Polish I.T.W., R.A.F.

The Preliminary Test was instituted at the request of the Air Ministry and was restricted to Service Personnel. The oversea candidates for the test were almost all Army and R.A.F. personnel in the Middle East. The Preliminary candidates in December in Great Britain were almost all Italian prisoners-of-war, for whom special papers were set; Italians were then admitted also to the other examinations. The Preliminary Test will be held for Service Personnel and Italians in April 1945, possibly for the last time; the examination will probably reappear as a simple test for general oversea use. A special Lower Certificate examination will also be held for Service Personnel and Italians in April 1945.

3. The table overleaf shows the candidates as far as possible by categories. It reveals the very substantial use made of the examinations by the Services, particularly the Royal Air Force. The figures for civilians at Home Centres also include a certain number of Service candidates who were not officially recorded as such when they entered at the Syndicate's civilian centres, e.g. men on leave at Cambridge or on courses in London.



CAMBRIDGE ASSESSMENT

Diversity

General Council of
Medical Education & Registration,
OF THE UNITED KINGDOM.

32, Soho Square, London, W.

6th January 1869.

Dear Sir,

I am directed by the Branch Council for England of the General Council of Medical Education and Registration of the United Kingdom, to request you to communicate to the Examiners, who conduct the Cambridge Local Examinations, (Senior), the Resolution passed by the General Medical Council, of which 6 copies are enclosed.

I am further directed to ask per-



Overseas Examinations



CAMBRIDGE ASSESSMENT

9. Agricultural Biology.

It was reported that the Biology Sub-Committee had approved a syllabus in Agricultural Biology prepared in consultation between Makerere College and the Education Department, Kampala, for use by schools in Uganda. It was agreed that the question of the title be further discussed with the University College, in case it should be thought that "Biology" would be a better title because already generally accepted for exemption purposes.

12. African Languages.

(a) Swahili. It was reported that the syllabus was being revised.

(b) Shona. Proposals from the Department of Native Education, S. Rhodesia, that a book for reading and a grammar book be prescribed and that the question paper be printed in standard Roman letters was considered. It was felt to be important that, before a change was made, sufficient reading matter and a dictionary with new orthography should be available

(c) The Committee noted the conclusions reached by the West African Examinations Council about the acceptance of African Languages for examination. It was felt to be unsatisfactory to require that a language must be spoken by as many as half a million people before consideration will be given to it as an examination subject.

11. Religious Knowledge: proposed change of name.

The Committee was asked for its views about a suitable name for this subject in view of the introduction of a subject for candidates of the Islamic Religion. It was suggested that the most suitable name for the subject was Scripture Knowledge with a sub-title 'Christian' or 'Islamic'.

Localisation

DECEMBER 1960 75

GEOGRAPHY 250/2 (c)

(For Centres in the Federation of Rhodesia and Nyasaland)

PAPER II
(Two hours)

Answer four questions: two from Section A, and two others, both from Section B or both from Section C.

Candidates in Mauritius will answer four questions including at least one question from Section A and at least one from Sections B or C.

Sketch-maps and diagrams should be drawn whenever they serve to illustrate an answer.

SECTION A

1. (a) On Map No. I:
 - (i) Name Nyasaland and the territories which adjoin it.
 - (ii) Name four of the towns marked by dots.
 - (iii) Mark the main railway system of Nyasaland and indicate its connections with the coast.
 - (iv) Shade the main areas in Nyasaland important for the production of tea and cotton.
- (b) Describe the production of tea and cotton in Nyasaland.
2. Describe and give reasons for the distribution of population in Northern Rhodesia.
3. (a) Minerals and agricultural products are the chief exports from Southern Rhodesia. Draw a sketch-map to show:
 - (i) The names of these exports and where they are produced.
 - (ii) The routes and ports by which they are exported.
 - (iii) The main markets for these exports.
- (b) Show the importance of exports to the people of Southern Rhodesia.

555/1

No. KAD PENGENALAN ANGRA GILIRAN

LEMBAGA PEPERIKSAAN TEMPATAN
UNIVERSITI CAMBRIDGE
Sijil Pelajaran Malaysia dan Sijil Am Pelajaran
DENGAN KERJASAMA KEMENTERIAN PELAJARAN MALAYSIA

KAJIHAYAT

KERTAS 1
(Dua jam)

Jawab semua soalan

Jawapan kepada Bahagian 1 hendaklah ditulis dalam ruangan yang disediakan dalam kertas soalan.

Jawapan kepada Bahagian 2 hendaklah ditulis di halaman bersepari di akhir kertas soalan dan jika perlu, kertas jawapan tambahan boleh diminta daripada penyelia.

Sebarang kertas tambahan hendaklah dilikat dengan kuat dan mengikat susunan yang betul di belakang kertas soalan ini; ia hendaklah dilikat supaya halaman-halamannya terlelah rata bila dibuka dan dengan mudah dapat dibalikkan oleh pemeriksa.

Calon-calon dinasihatkan supaya mengambil masa satu jam untuk Bahagian 1 dan satu jam untuk Bahagian 2.

No. SOALAN	(KERTAS SAHAJA)	PEMERIKSA
1		
2		
3		
4		
5		
6		
7		
8		
9		
JUMLAH		

Kertas Soalan ini mengandungi 24 halaman bercetak

No. 74/24





CAMBRIDGE ASSESSMENT

The legacy of other boards

Meeting M.E.I. Single Award Maths, 16 Oct 1985

Present Lamb (in chair), Rogers, Hale, S.L. Farnham (Harrow), H. Neill (St Dunstons), Mookes (St Paul's), M.I. Jones (Highgate) + one other from Highgate

Absent M.F. Robbins of Enby & Brown.

The M.E.I. syllabus is middle of the road (between normal & SMP). The Awarders think it too heavy and many boys will have done M.E.I. Award Maths at 8 lev. However some will not.

Numbers of cards in 1987

	with sets	single set
Harrow	15	15
St Dunstons	6	30
Highgate	8	35
St Paul's	10	25
Enby	not in 1987	

Other interested schools: Mill Hill, Conrde, Merchant Taylors, Westminster, Bedford, Nurri Ash Sch.

Schools will provide list of journals (incl. statistics)

Specimen papers to be prepared by over 3 Awarders. They will consult schoolmasters & let one hour drafts by end of Feb 1986. Print & circulate to schools (include form for feedback)

Double School

Awarders Mearns & Cookson (both pure maths), P. Macdonald, Brunel College, W3 (statistics), J.S. Wilson " " (applied maths)

Revisers Goodling (on Jones or Rivers)

Small group → Brown? (a doc on M.E.I. committee)

Dates for meeting: Sat 13 Nov or Sat 6 Dec.

Candidate Name _____

Centre Number	Candidate Number

OXFORD AND CAMBRIDGE SCHOOLS EXAMINATION BOARD
 General Certificate of Education Advanced Level
MEI STRUCTURED MATHEMATICS 9665/3
 PAPER 3 Pure Mathematics 3
 Section B: Comprehension
 Friday, 17 JANUARY 1997 Afternoon up to 1 hour
 Candidates answer on the question paper.
 Additional materials:
 Rough paper
 Student's Handbook

TIME up to 1 hour

INSTRUCTIONS TO CANDIDATES

Write your name, Centre number and candidate number in the spaces at the top of this page. Answer all questions. Write your answers in the spaces provided on the question paper.

INFORMATION FOR CANDIDATES

The approximate allocation of marks is given in brackets [] at the end of each question or part question. The insert contains the text for use with the questions. You may find it helpful to make notes and do some calculations as you read the passage. You are not required to hand in these notes with your question paper. You are advised that an answer may receive no marks unless sufficient detail of the working is shown to indicate that a correct method is being used.

FOR EXAMINER'S USE	
1	
2	
3	
4	
5	
6	
TOTAL	

This question paper consists of 3 printed pages, 1 blank page and an insert.

Corporate Changes



CAMBRIDGE ASSESSMENT



UNIVERSITY of CAMBRIDGE
Local Examinations Syndicate

...We were all running exams. There's all... the basic, same sorts of things happening... they were all slightly different but the basic structure is all the same sorts of things.... Back from CSE boards right through to now... , I can still see similarities, between some of the boards, ... the basics are still there, they're still exams. We still print the papers, most of them... We were printing papers then, we're still printing papers now. B.F, 2013



CAMBRIDGE ASSESSMENT

